

APP CRS	Rwy Idg	6000
186°	TDZE	143
	Apt Elev	146

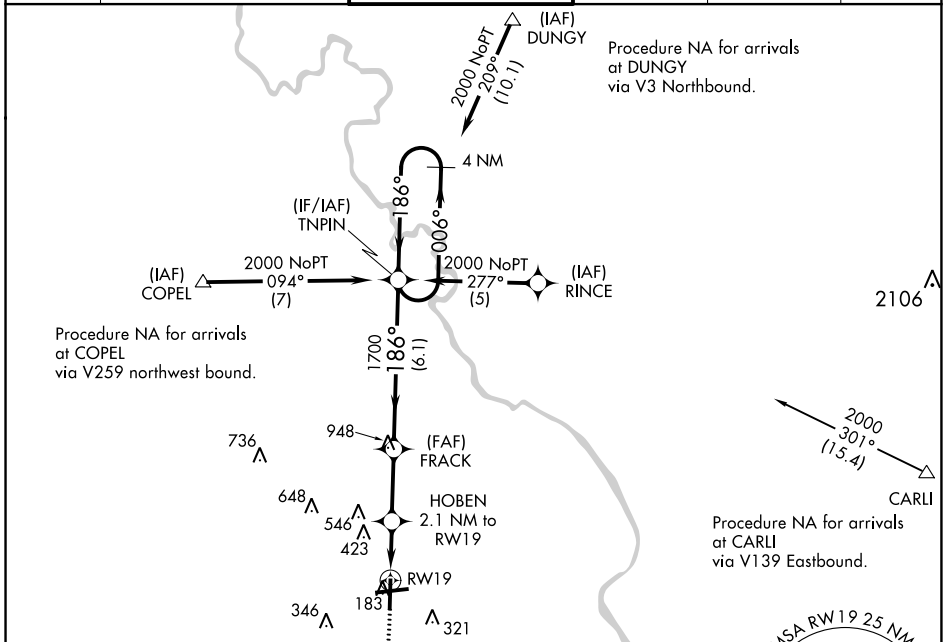
RNAV (GPS) RWY 19

FLORENCE RGNL (FLO)

V DME/DME RNP-0.3 NA. Helicopter visibility reduction below 1 SM NA.
A When local altimeter setting not received, use Darlington altimeter setting and increase all MDA 60 feet. Night Landing: Rwy 1, 19, 27 NA.

MISSED APPROACH: Climb to 2000 direct PAILS and via 184° track to NUTAL and hold.

ATIS	FLORENCE APP CON*	FLORENCE TOWER*	GND CON	CLNC DEL	UNICOM
123.625	118.6 341.7 (256°-074°) 135.25 316.15 (075°-255°)	125.1 (CTAF) 353.85	121.9 353.85	121.9 353.85	122.95

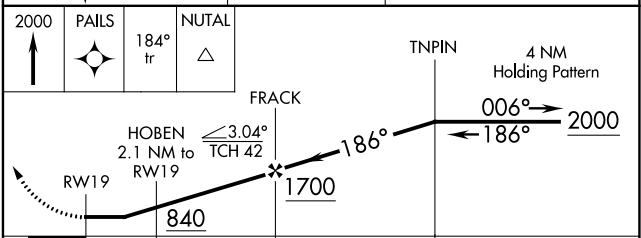
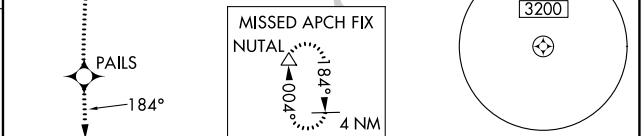
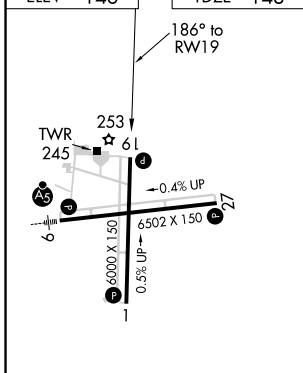


Procedure NA for arrivals at COPEL via V259 northwest bound.

Procedure NA for arrivals at DUNGY via V3 Northbound.

Procedure NA for arrivals at CARLI via V139 Eastbound.

ELEV	146	TDZE	143
------	------------	------	------------



CATEGORY	A	B	C	D
LNAV MDA	580-1	437 (500-1)	580-1¼ 437 (500-1¼)	580-1½ 437 (500-1½)
CIRCLING	640-1 494 (500-1)	660-1 514 (600-1)	660-1½ 514 (600-1½)	740-2 594 (600-2)

REIL Rws 1, 19 and 27 **1**
 HIRL Rwy 9-27 **1**

SE-2, 08 OCT 2020 to 05 NOV 2020

SE-2, 08 OCT 2020 to 05 NOV 2020