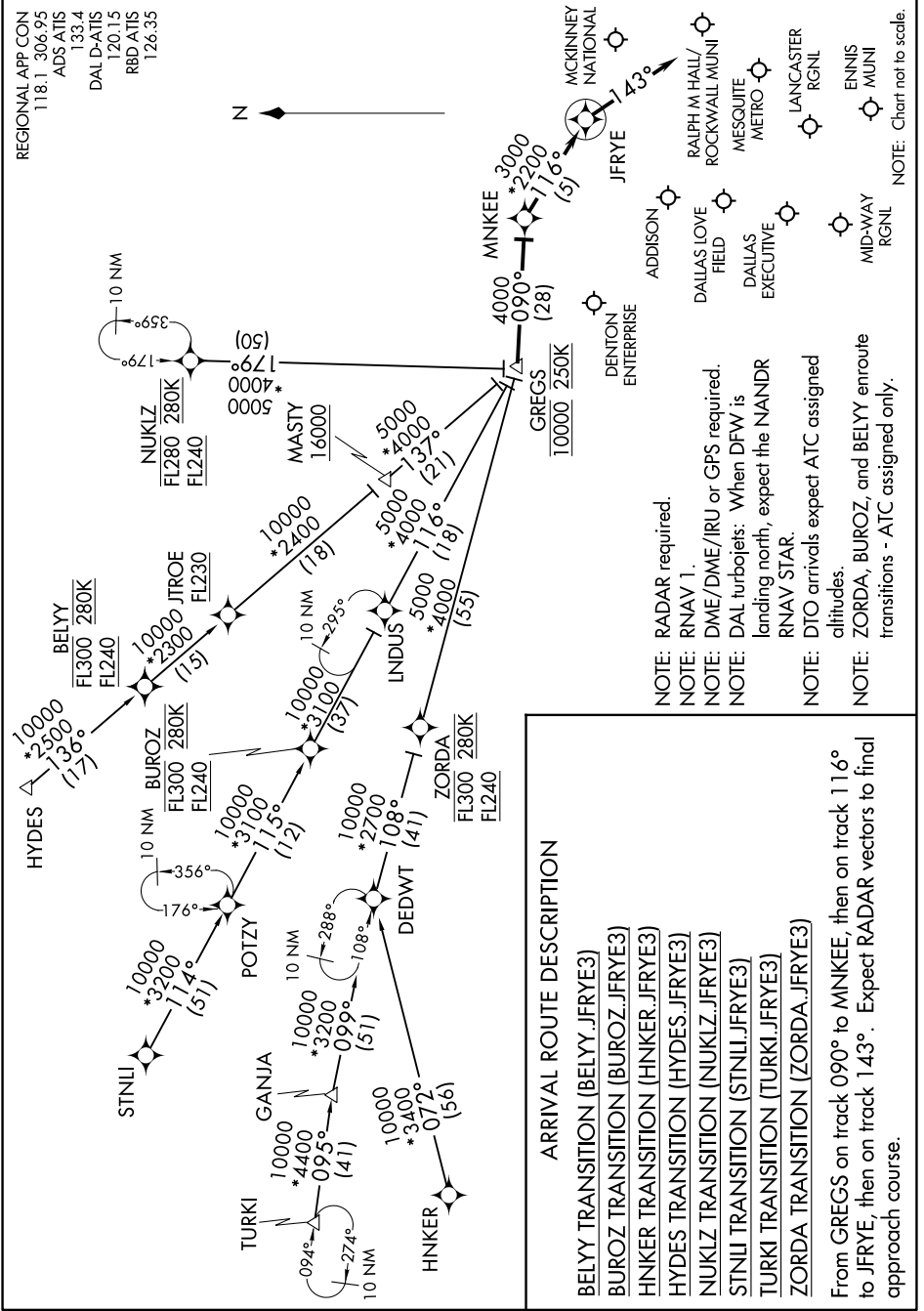


# JFRYE THREE ARRIVAL (RNAV)

DALLAS FORT WORTH, TEXAS

SC-2, 08 OCT 2020 to 05 NOV 2020



**ARRIVAL ROUTE DESCRIPTION**

BELYE TRANSITION (BELYE.JFRYE3)  
 BUIROZ TRANSITION (BUIROZ.JFRYE3)  
 HNKER TRANSITION (HNKER.JFRYE3)  
 HYDES TRANSITION (HYDES.JFRYE3)  
 NUKLZ TRANSITION (NUKLZ.JFRYE3)  
 STNLI TRANSITION (STNLI.JFRYE3)  
 TURKI TRANSITION (TURKI.JFRYE3)  
 ZORDA TRANSITION (ZORDA.JFRYE3)

From GREGS on track 090° to MNKEE, then on track 116° to JFRYE, then on track 143°. Expect RADAR vectors to final approach course.

# JFRYE THREE ARRIVAL (RNAV)

DALLAS FORT WORTH, TEXAS

SC-2, 08 OCT 2020 to 05 NOV 2020

NOTE: Chart not to scale.