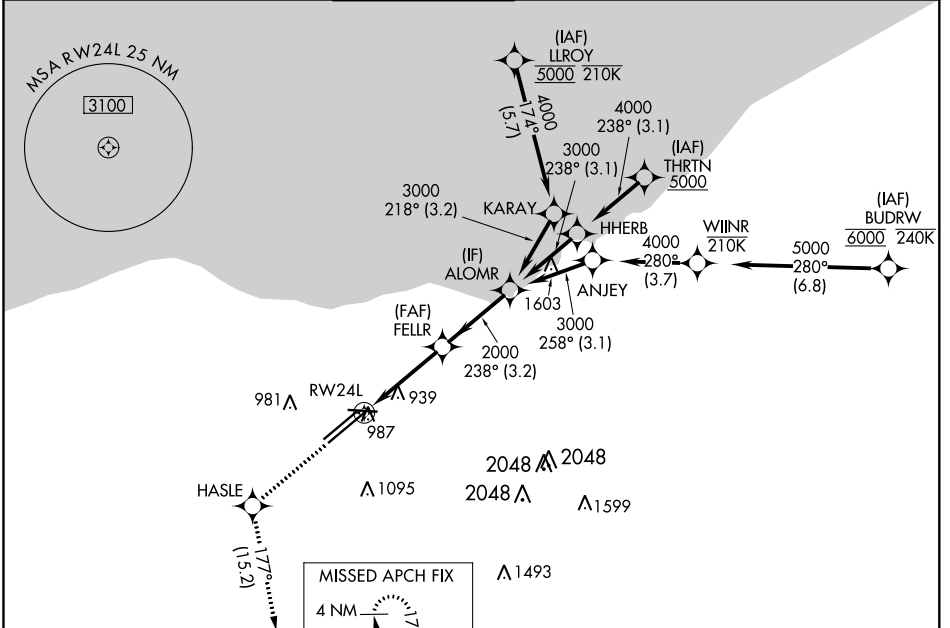


WAAS CH 77506 W24B	APP CRS 238°	Rwy Idg TDZE Apt Elev	9956 786 799
--	------------------------	-----------------------------	---

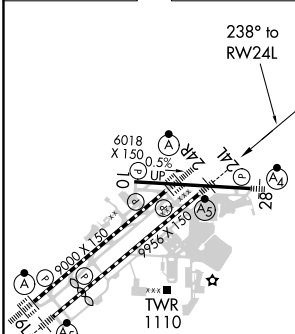
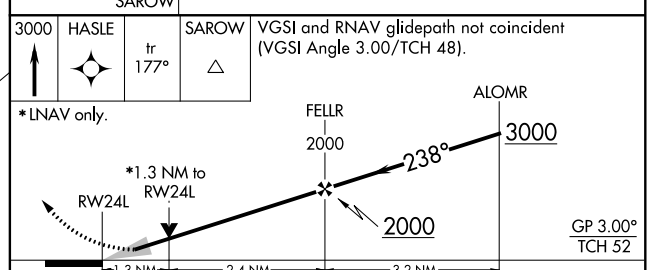
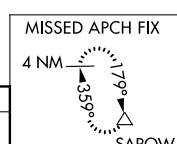
RNAV (GPS) Y RWY 24L

CLEVELAND-HOPKINS INTL (CLE)

RNP APCH. ▼ Circling Rwy 10 NA at night. For uncompensated Baro-VNAV systems, LNAV/VNAV NA below -1°C or above 54°C.		MALS R AS	MISSED APPROACH: Climb to 3000 direct HASLE and on track 177° to SAROW and hold.		
D-ATIS ARR 127.85 DEP 132.375	CLEVELAND APP CON 124.0 346.325	CLEVELAND TOWER 124.5 273.45	GND CON 121.7 273.45	CLNC DEL 125.05 273.45	CPDLC



ELEV 799	D	TDZE 786
----------	----------	----------



CATEGORY	A	B	C	D
LPV DA		986/18	200 (200-½)	
LNAV/VNAV DA		1168/35	382 (400-¾)	
LNAV MDA	1240/24	454 (500-½)	1240/45	454 (500-¾)
C CIRCLING	1420-1	621 (700-1)	1420-1¾ 621 (700-1¾)	1420-2 621 (700-2)

REIL Rwy 10
TDZ/CL Rwy 6L, 6R, 24L and 24R
HIRL Rws 6L-24R, 6R-24L and 10-28

EC-2, 08 OCT 2020 to 05 NOV 2020

EC-2, 08 OCT 2020 to 05 NOV 2020