

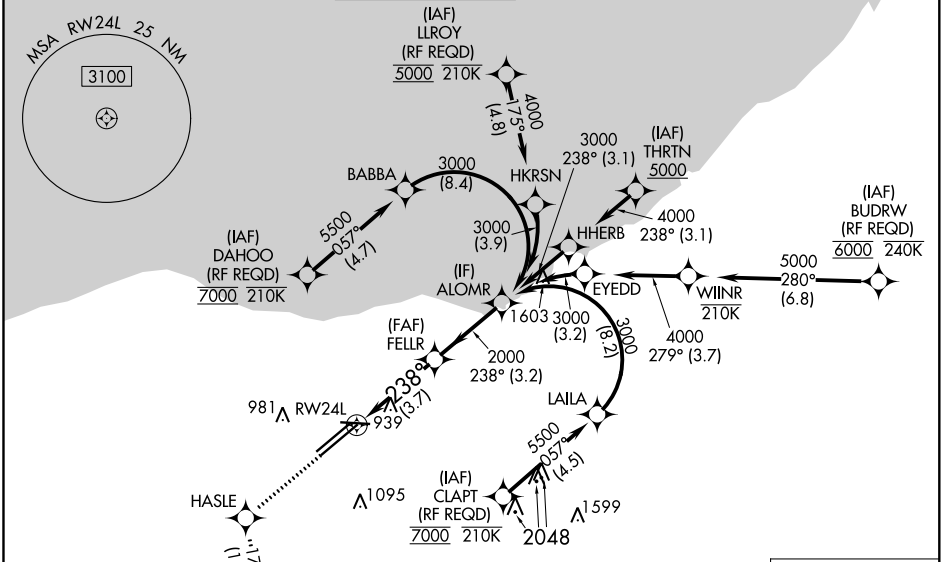
APP CRS 238°	Rwy Idg TDZE Apt Elev	9956 786 799
------------------------	-----------------------------	---

RNAV (RNP) Z RWY 24L

CLEVELAND-HOPKINS INTL (CLE)

RNP AR APCH.		MALSRL	MISSED APPROACH: Climb to 3000 direct HASLE and on track 177° to SAROW and hold.		
▼ For uncompensated Baro-VNAV systems, procedure NA below -18°C (0°F) or above 54°C (130°F). For inop ALS, increase RNP 0.19 all Cats visibility to RVR 5500.					

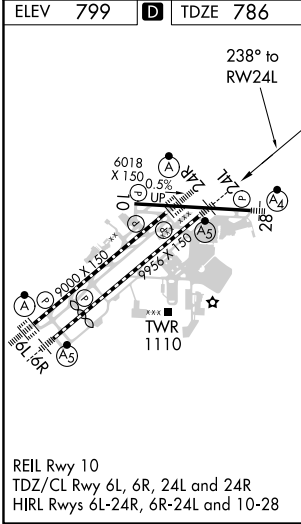
D-ATIS ARR 127.85 DEP 132.375	CLEVELAND APP CON 124.0 346.325	CLEVELAND TOWER 124.5 273.45	GND CON 121.7 273.45	CLNC DEL 125.05 273.45	CPDLC
---	---	--	--------------------------------	----------------------------------	-------



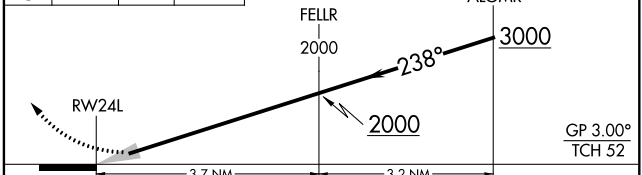
EC-2, 08 OCT 2020 to 05 NOV 2020

EC-2, 08 OCT 2020 to 05 NOV 2020

ELEV 799	D	TDZE 786
----------	----------	----------



3000	HASLE	SAROW	VGSI and RNAV glidepath not coincident (VGSI Angle 3.00/TCH 48).
↑		tr 177°	



CATEGORY	A	B	C	D
RNP 0.19 DA		1140/30	354 (400-5%)	
RNP 0.30 DA		1243/45	457 (500-7%)	

AUTHORIZATION REQUIRED