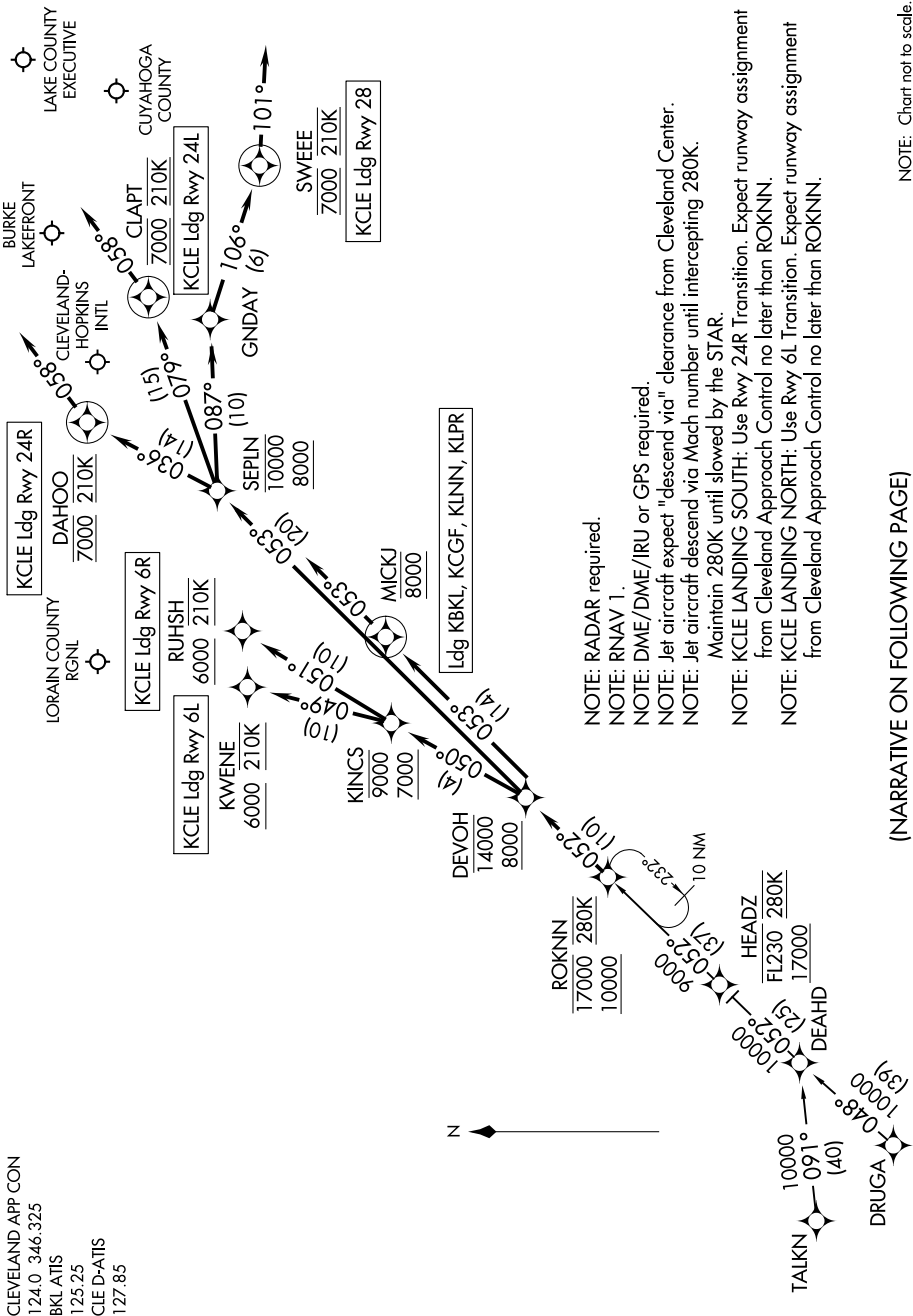


ROKNN THREE ARRIVAL (RNAV)

CLEVELAND, OHIO

EC-2, 08 OCT 2020 to 05 NOV 2020

CLEVELAND APP CON
 124.0 346.325
 BKL ATIS
 125.25
 CLE D-ATIS
 127.85



NOTE: Chart not to scale.

- NOTE: RADAR required.
- NOTE: RNAV 1.
- NOTE: DME/DME/IRU or GPS required.
- NOTE: Jet aircraft expect "descend via" clearance from Cleveland Center.
- NOTE: Jet aircraft descend via Mach number until intercepting 280K.
- Maintain 280K until slowed by the STAR.
- NOTE: KCLE LANDING SOUTH: Use Rwy 24R Transition. Expect runway assignment from Cleveland Approach Control no later than ROKNN.
- NOTE: KCLE LANDING NORTH: Use Rwy 6L Transition. Expect runway assignment from Cleveland Approach Control no later than ROKNN.

(NARRATIVE ON FOLLOWING PAGE)

ROKNN THREE ARRIVAL (RNAV)

CLEVELAND, OHIO

EC-2, 08 OCT 2020 to 05 NOV 2020