

VORTAC CEC	APP CRS	Rwy Idg	5000
109.0	346°	TDZE	59
Chan 27		Apt Elev	61

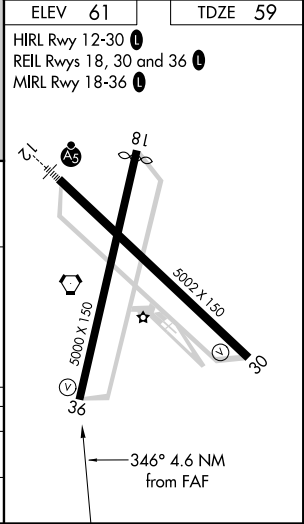
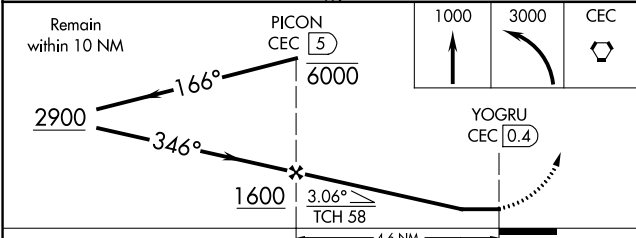
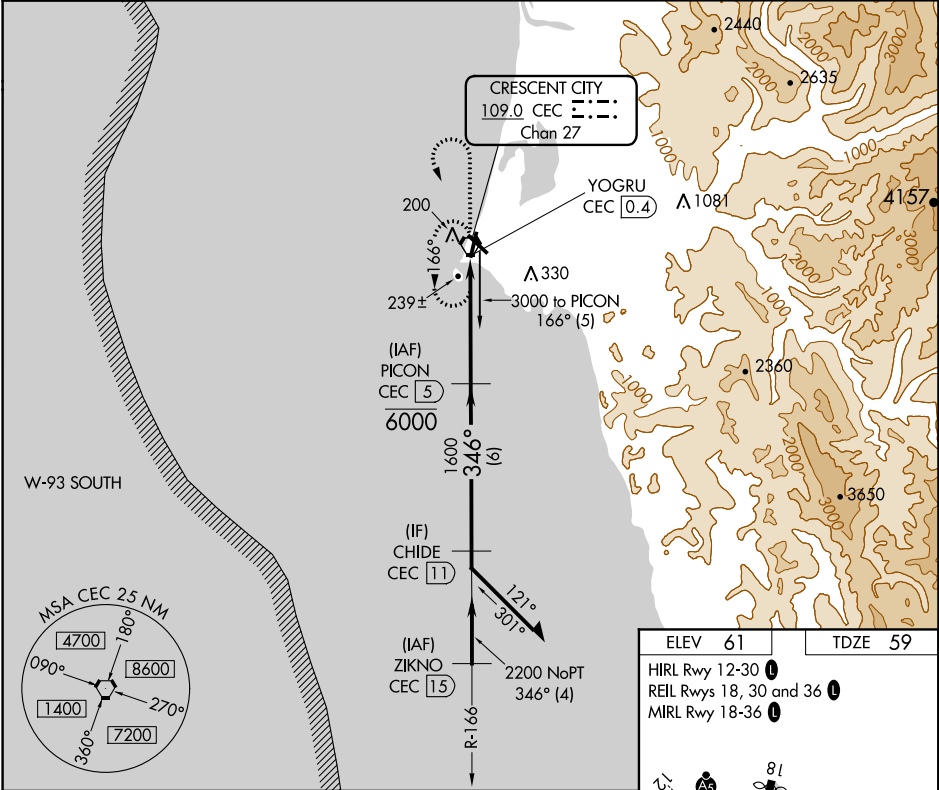
# VOR/DME RWY 36

JACK MC NAMARA FIELD (CEC)

**⚠** When local altimeter setting not received, use Brookings altimeter setting and increase all MDA 100 feet; increase S-36 Cat C/D and Circling Cat D visibilities ½ mile and Circling Cat C visibility ½ mile. Helicopter visibility reduction below 1 SM NA. Night landing: Rwy 36 operational VGSI required, remain on or above VGSI glidepath until threshold. Night landing: Rwy 18, 30 NA.

**MISSED APPROACH:** Climb to 1000 then climbing left turn to 3000 direct CEC VORTAC and hold, continue climb-in-hold to 3000.

ASOS <b>119.925</b>	SEATTLE CENTER <b>124.85 306.3</b>	UNICOM <b>122.8 (CTAF) 0</b>
------------------------	---------------------------------------	---------------------------------



CATEGORY	A	B	C	D
S-36	500-1	441 (500-1)	500-1 <sup>3</sup> / <sub>8</sub>	441 (500-1 <sup>3</sup> / <sub>8</sub> )
<b>C</b> CIRCLING	540-1	479 (500-1)	640-1 <sup>1</sup> / <sub>2</sub> 579 (600-1 <sup>1</sup> / <sub>2</sub> )	640-2 579 (600-2)

SW-2, 08 OCT 2020 to 05 NOV 2020

SW-2, 08 OCT 2020 to 05 NOV 2020