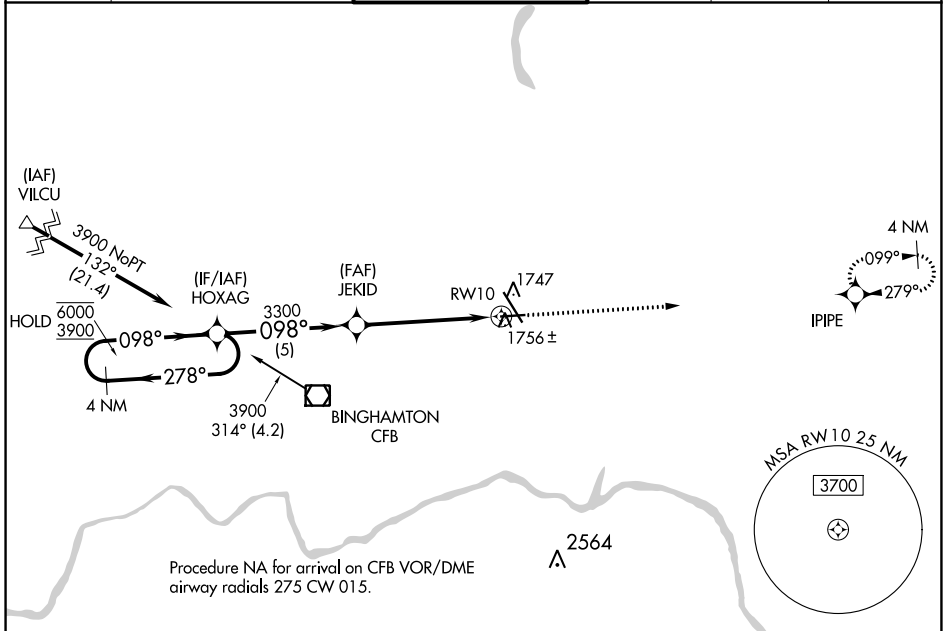


WAAS CH 93820 W10A	APP CRS 098°	Rwy Idg TDZE Apt Elev	5001 1591 1636
--	------------------------	-----------------------------	---

RNAV (GPS) RWY 10

GREATER BINGHAMTON/EDWIN A LINK FIELD (BGM)

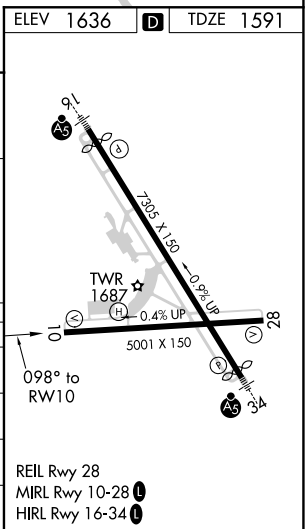
RNP APCH.		MISSED APPROACH: Climb to 4200 direct IPIPE and hold.			
For uncompensated Baro-VNAV systems, LNAV/VNAV NA below -21°C or above 54°C.					
ATIS 128.15	BINGHAMTON APP CON * 118.6 257.625	BINGHAMTON TOWER * 119.3 (CTAF) 0 239.25	GND CON 121.9	CLNC DEL 125.05	UNICOM 122.95



NE-2, 08 OCT 2020 to 05 NOV 2020

NE-2, 08 OCT 2020 to 05 NOV 2020

ELEV 1636		D TDZE 1591	
4 NM Holding Pattern HOXAG 6000 ← 278° 3900 → 098° GP 3.00° TCH 53		4200 IPIPE *1.2 NM to RWY 10 *LNAV only RWY 10	
CATEGORY	A	B	C
LPV DA		1841-3/4	250 (300-3/4)
LNAV/VNAV DA		1937-1	346 (400-1)
LNAV MDA	2020-1	429 (400-1)	2020-1 1/4 429 (400-1 1/4)
CIRCLING	2120-1	484 (500-1)	2120-1 1/2 484 (500-1 1/2) 2200-2 564 (600-2)



REIL Rwy 28
MIRL Rwy 10-28
HIRL Rwy 16-34