

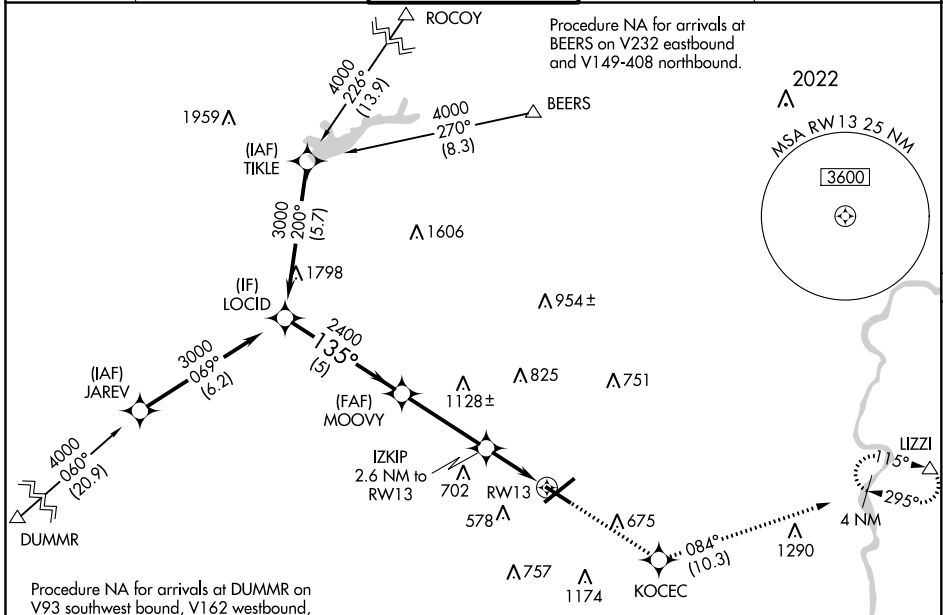
WAAS CH 82532 W13A	APP CRS 135°	Rwy Idg TDZE 386 Apt Elev 394	5800
--	------------------------	---	-------------

RNAV (GPS) RWY 13

LEHIGH VALLEY INTL (ABE)

<p>V For uncompensated Baro-VNAV systems, LNAV/VNAV NA below -16°C (4°F) or above 54°C (130°F). DME/DME RNP-0.3 NA. For inoperative MALSR, increase LNAV Cat C/D visibility to 1½ mile.</p>	<p>MALSR</p>	<p>MISSED APPROACH: Climb to 3000 direct KOCEC and on track 084° to LIZZI and hold.</p>
--	--------------	---

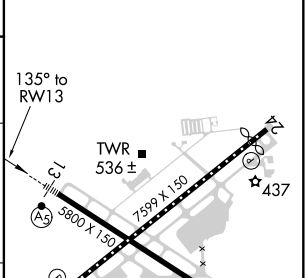
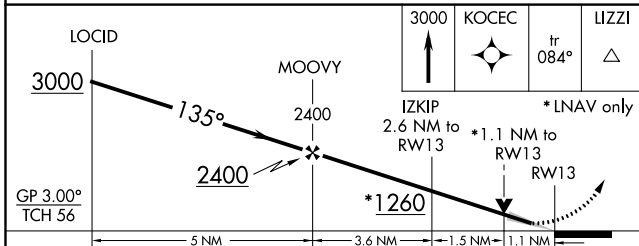
<p>ATIS 126.975</p>	<p>ALLENTOWN APP CON 119.65 124.45 351.8</p>	<p>ALLENTOWN TOWER 120.5 257.95</p>	<p>GND CON 121.9 257.95</p>	<p>CLNC DEL 124.05 257.95</p>
--------------------------------	---	--	--	--



NE-4, 08 OCT 2020 to 05 NOV 2020

NE-4, 08 OCT 2020 to 05 NOV 2020

ELEV 394	D TDZE 386
----------	-------------------



CATEGORY	A	B	C	D
LPV DA		586-½ 200 (200-½)		
LNAV/VNAV DA		700-½ 314 (400-½)		
LNAV MDA	800-½ 414 (500-½)		800-¾ 414 (500-¾)	
C CIRCLING	900-1 506 (600-1)		1180-2¼ 786 (800-2¼)	1600-3 1206 (1300-3)

REIL Rwy 24 and 31
HIRL Rwy 6-24 and 13-31