

APP CRS 092°	Rwy Idg TDZE Apt Elev	N/A N/A 200
------------------------	-----------------------------	--

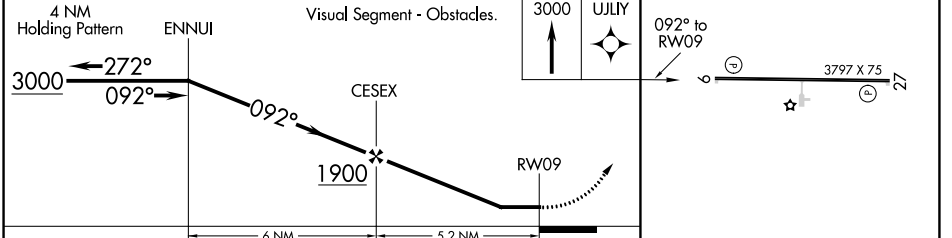
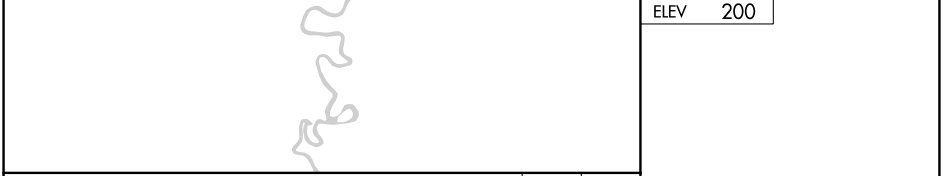
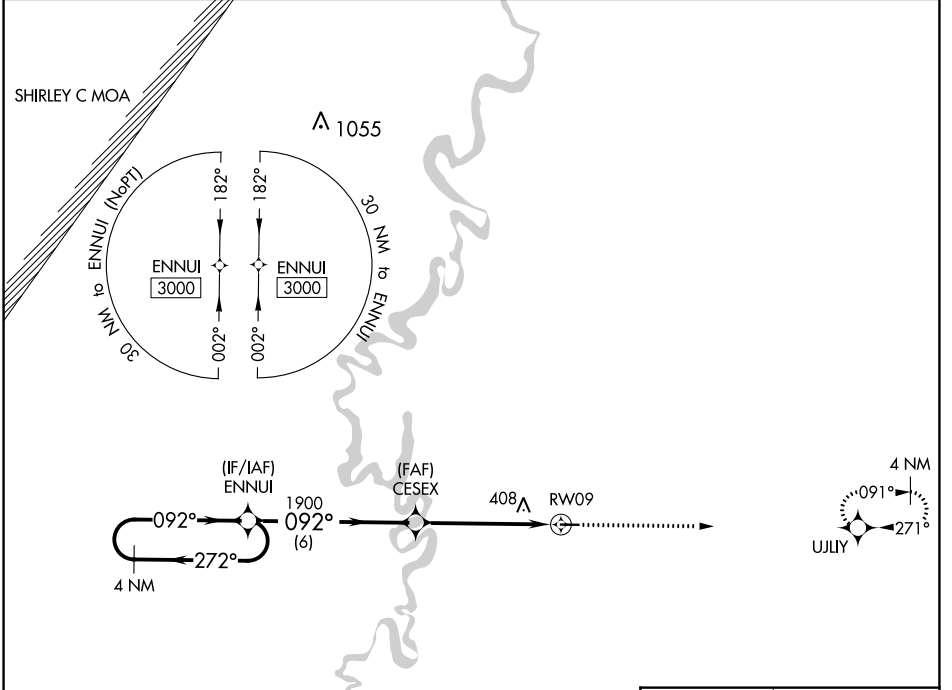
RNAV (GPS)-A

WOODRUFF COUNTY (M64)

NA Rwy 9, 27 helicopter visibility reduction below 1 SM NA. DME/DME RNP-0.3 NA. Procedure NA at night. Use Newport altimeter setting.

MISSED APPROACH: Climb to 3000 direct UJLY and hold.

M19 AWOS-3PT 118.15	MEMPHIS CENTER 135.3 335.8	CTAF 122.9 0
-------------------------------	--------------------------------------	------------------------



CATEGORY	A	B	C	D
C CIRCLING	740-1 540 (600-1)	820-1 620 (700-1)	NA	

MIRL Rwy 9-27 **0**

SC-1, 10 SEP 2020 to 08 OCT 2020

SC-1, 10 SEP 2020 to 08 OCT 2020