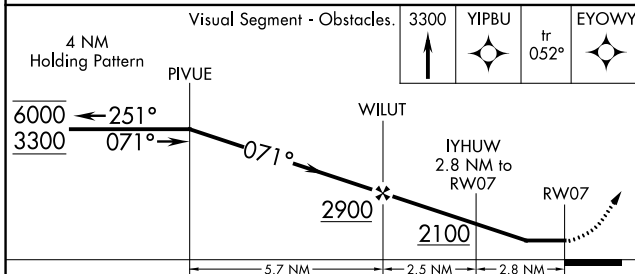
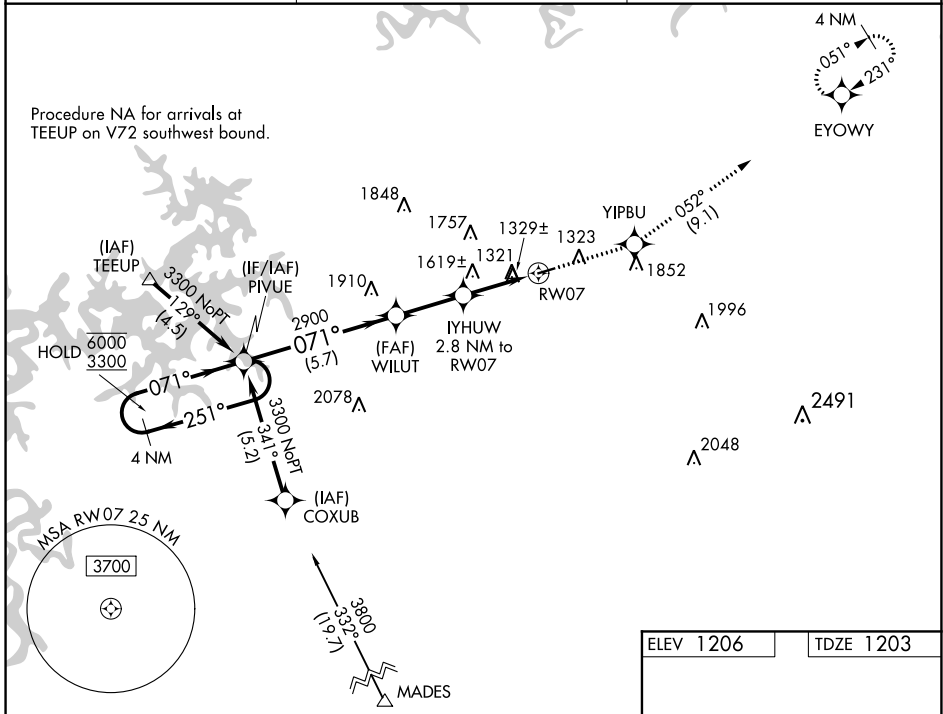


WAAS CH 40242 W07A	APP CRS 071°	Rwy ldg TDZE 1203 Apt Elev 1206
--	------------------------	---

RNAV (GPS) RWY 7

CARROLL COUNTY (4M1)

RNP APCH.		MISSED APPROACH: Climb to 3300 direct YIPBU and on track 052° to EYOWY and hold.
BBG AWOS-3 124.625	RAZORBACK APPROACH ★ 126.6 305.2	CTAF 122.9



CATEGORY	A	B	C	D
LP MDA	1660-1	457 (500-1)	NA	
LNAV MDA	1940-1	737 (800-1)	NA	
C CIRCLING	1940-1 734 (800-1)	1980-1 774 (800-1)	NA	

ELEV 1206	TDZE 1203
-----------	-----------

REIL Rwy 7 and 25
MIRL Rwy 7-25

SC-1, 10 SEP 2020 to 08 OCT 2020

SC-1, 10 SEP 2020 to 08 OCT 2020