

APP CRS 332°	Rwy Idg TDZE Apt Elev	3000 267 267
------------------------	-----------------------------	---

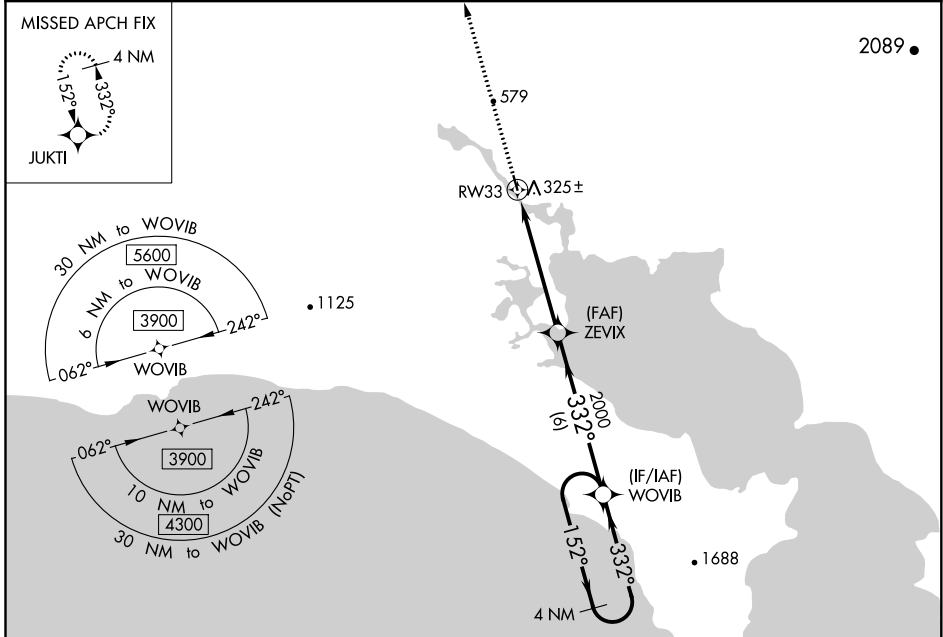
RNAV (GPS) RWY 33

WHITE MOUNTAIN (WMO) (P A WM)

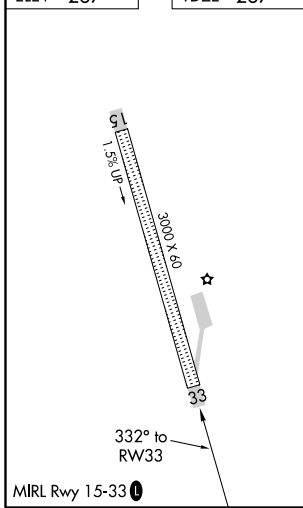
⚠ DME/DME RNP-0.3 NA. VDP NA with Golovin altimeter setting. When local altimeter not received, use Golovin altimeter setting and increase all MDA 60 feet.

MISSED APPROACH: Climb to 3800 direct JUKTI and hold.

AWOS-3P 121.45	ANCHORAGE CENTER 133.3 290.4	NOME RADIO 122.05	CTAF 122.9
--------------------------	--	-----------------------------	----------------------



ELEV 267	TDZE 267
----------	----------



3800	JUKTI	WOVIB	4 NM Holding Pattern
↑	✧		
0.9 NM to RW33	3.00° TCH 40	2000	152° → 3900
← 332°			← 332°
0.9	4.4 NM	6 NM	
CATEGORY	A	B	C
LNAV MDA	580-1	313 (400-1)	NA
CIRCLING	820-1	553 (600-1)	NA

AK, 10 SEP 2020 to 05 NOV 2020

AK, 10 SEP 2020 to 05 NOV 2020