

WAAS CH <b>82331</b> <b>W15A</b>	APP CRS <b>152°</b>	Rwy Idg TDZE Apt Elev	<b>3000</b> <b>267</b> <b>267</b>
--	------------------------	-----------------------------	---

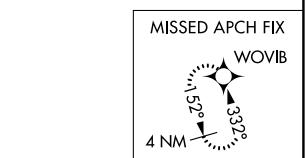
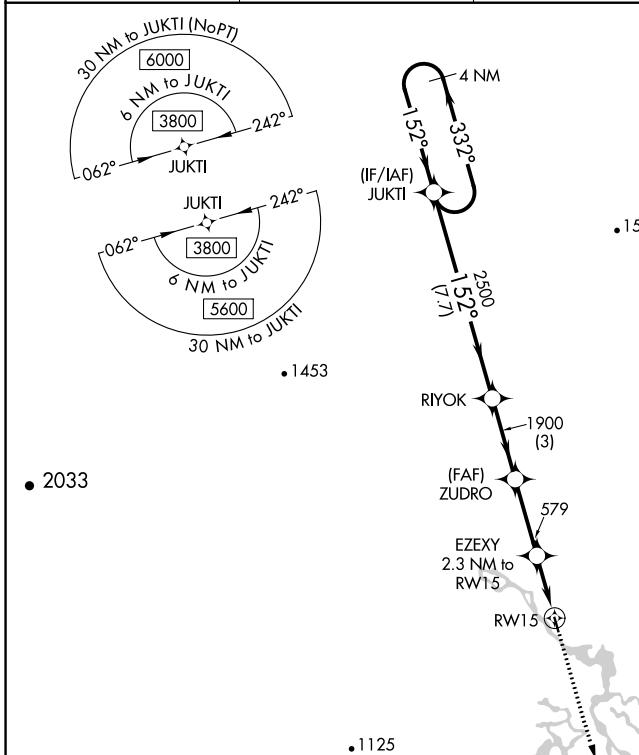
# RNAV (GPS) RWY 15

WHITE MOUNTAIN (WMO) (P A W M)

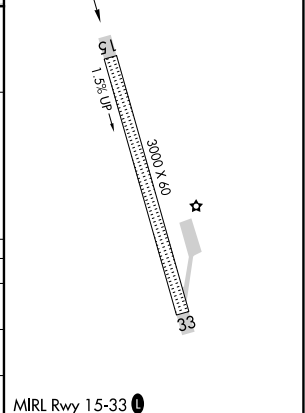
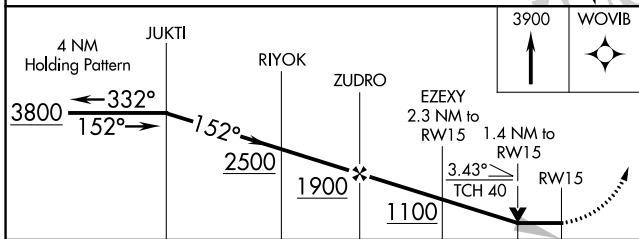
**⚠** DME/DME RNP-0.3 NA. VDP NA with Golovin altimeter setting. When local altimeter not received, use Golovin altimeter setting and increase all MDA 60 feet.

**MISSED APPROACH:** Climb to 3900 direct WOVIB and hold, continue climb-in-hold to 3900.

AWOS-3P <b>121.45</b>	ANCHORAGE CENTER <b>133.3 290.4</b>	NOME RADIO <b>122.05</b>	CTAF <b>122.9</b> <b>0</b>
--------------------------	--	-----------------------------	-------------------------------



ELEV 267	TDZE 267
----------	----------



CATEGORY	A	B	C	D
LP MDA	700-1	433 (500-1)		NA
LNAV MDA	800-1	533 (600-1)		NA
CIRCLING	820-1	553 (600-1)		NA

AK, 10 SEP 2020 to 05 NOV 2020

AK, 10 SEP 2020 to 05 NOV 2020