

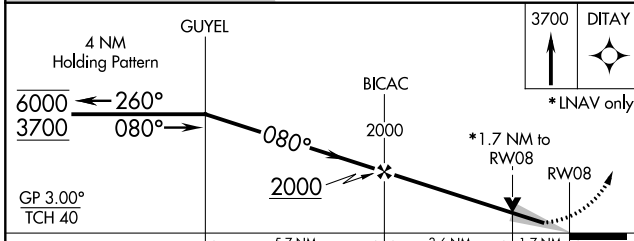
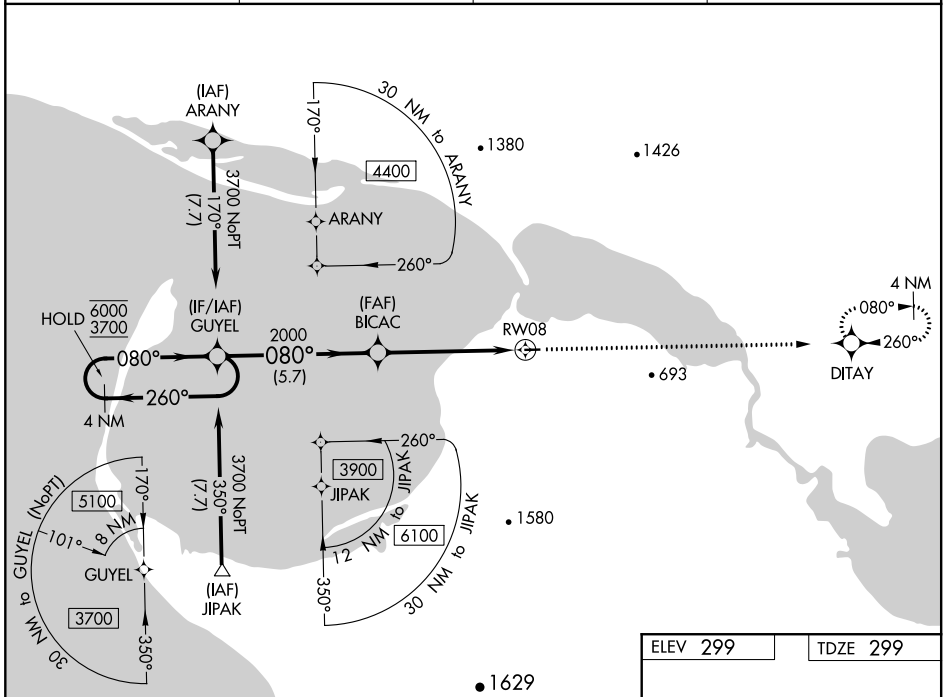
WAAS CH <b>78143</b> <b>W08A</b>	APP CRS <b>080°</b>	Rwy Idg TDZE Apt Elev	<b>2983</b> <b>299</b> <b>299</b>
--	------------------------	-----------------------------	---

# RNAV (GPS) RWY 8

TELLER (TER) (PATE)

RNP APCH.	MISSED APPROACH: Climb to 3700 direct DITAY and hold, continue climb-in-hold to 3700.
<p><b>▼</b> Circling NA south of Rwy 8-26. For uncompensated Baro-VNAV systems, LNAV/VNAV NA below -23°C or above 54°C.</p>	

AWOS-3P <b>118.375</b>	ANCHORAGE CENTER <b>133.3 290.4</b>	NOME RADIO <b>135.6</b>	CTAF <b>123.0</b>
---------------------------	--	----------------------------	----------------------



ELEV 299	TDZE 299
MIRL Rwy 8-26	

CATEGORY	A	B	C	D
LPV DA	499-1	200 (200-1)		NA
LNAV/VNAV DA	655-1	356 (400-1)		NA
LNAV MDA	860-1	561 (600-1)	860-1 <sup>5</sup> / <sub>8</sub> 561 (600-1 <sup>5</sup> / <sub>8</sub> )	NA
<b>C</b> CIRCLING	860-1 561 (600-1)	900-1 601 (700-1)	1060-2 <sup>1</sup> / <sub>4</sub> 761 (800-2 <sup>1</sup> / <sub>4</sub> )	NA

AK, 10 SEP 2020 to 05 NOV 2020

AK, 10 SEP 2020 to 05 NOV 2020