


WAAS CH 97543 W26A	APP CRS 260°	Rwy Idg TDZE Apt Elev	2983 299 299
--	------------------------	-----------------------------	---

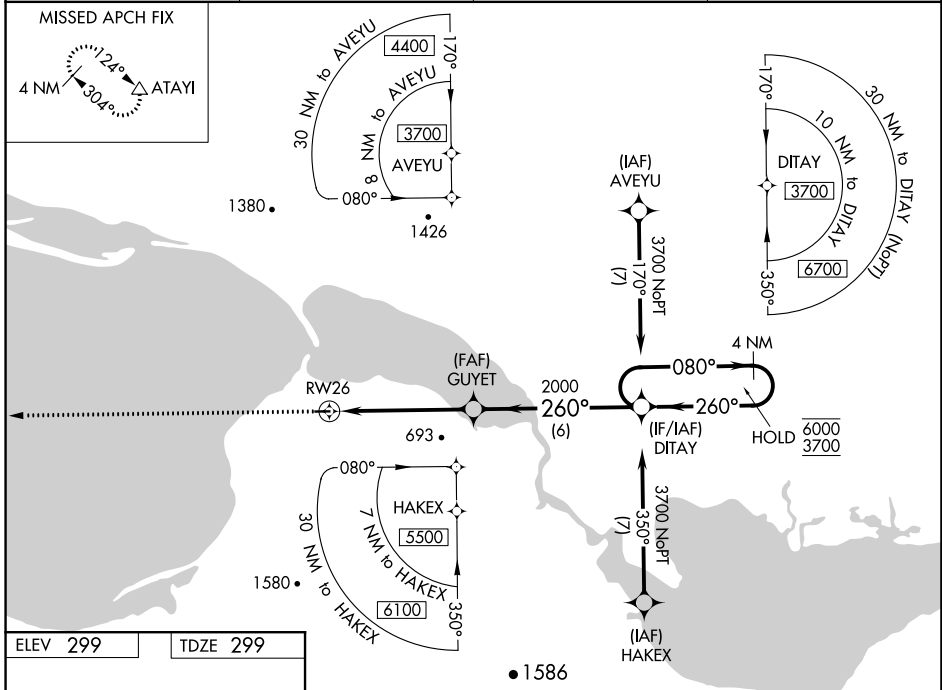
RNAV (GPS) RWY 26

TELLER (TER) (PATE)

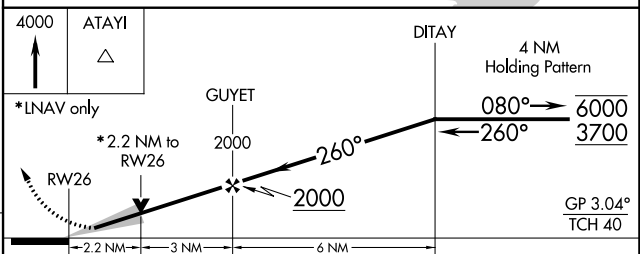
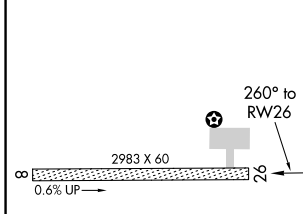
RNP APCH.
 Circling NA south of Rwy 8-26. For uncompensated Baro-VNAV systems, LNAV/VNAV NA below -23°C or above 54°C.


MISSED APPROACH: Climb to 4000 direct ATAYI and hold.

AWOS-3P 118.375	ANCHORAGE CENTER 133.3 290.4	NOME RADIO 135.6	CTAF 123.0
---------------------------	--	----------------------------	----------------------



ELEV 299	TDZE 299
-----------------	-----------------



CATEGORY	A	B	C	D
LPV DA	549-1 250 (300-1)			NA
LNAV/VNAV DA	549-1 250 (300-1)			NA
LNAV MDA	1060-1 761 (800-1)	1060-1¼ 761 (800-1¼)	1060-2½ 761 (800-2½)	NA
 CIRCLING	1060-1 761 (800-1)	1060-1¼ 761 (800-1¼)	1060-2¾ 761 (800-2¾)	NA

AK, 10 SEP 2020 to 05 NOV 2020

AK, 10 SEP 2020 to 05 NOV 2020