

APP CRS 073°	Rwy Idg TDZE Apt Elev	3280 57 57
------------------------	-----------------------------	---------------------------------------

RNAV (GPS) RWY 7

PILOT POINT (PNP)(PAPN)

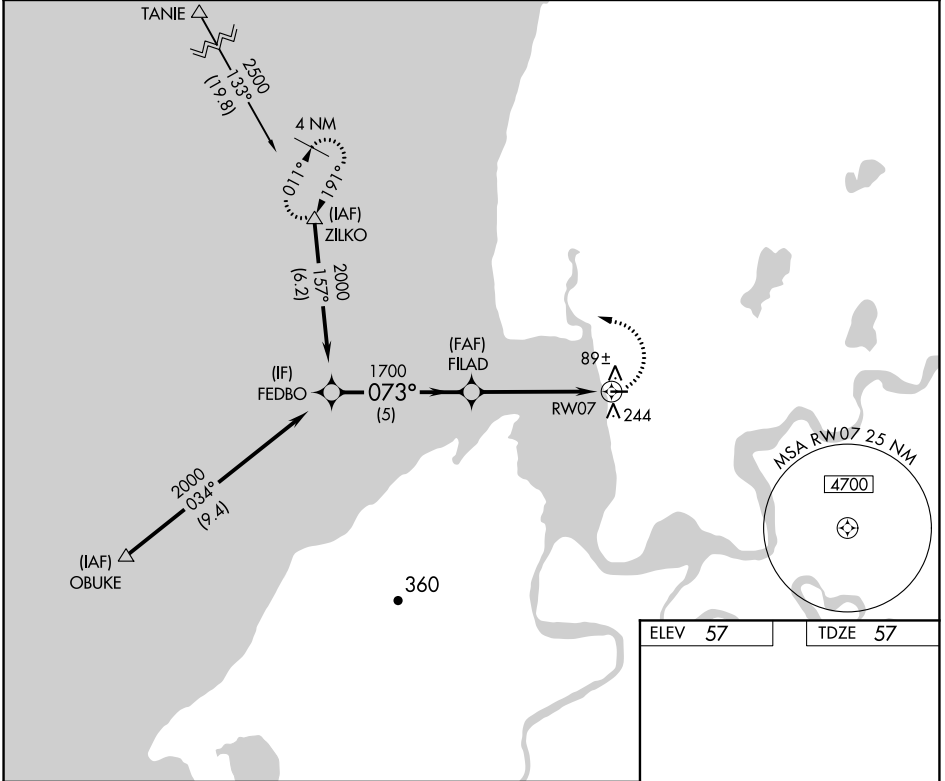
⚠ DME/DME RNP-0.3 NA. When local altimeter setting not received, use King Salmon altimeter setting and increase all MDA 180 feet.

MISSED APPROACH: Climbing left turn to 2500 direct ZILKO and hold.

AWOS-3P
118.375

ANCHORAGE CENTER
132.9 288.3

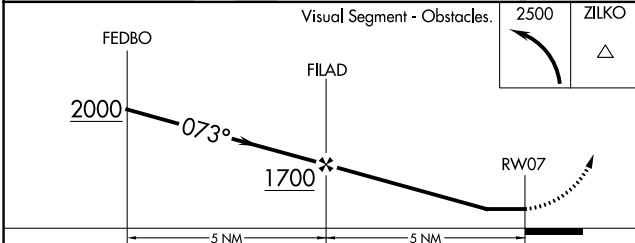
CTAF
122.9



AK, 10 SEP 2020 to 05 NOV 2020

AK, 10 SEP 2020 to 05 NOV 2020

ELEV 57	TDZE 57
---------	---------



Visual Segment - Obstacles. 2500 ZILKO	
073° to RWY07	
0.6% UP → 3280 X 75	
MIRL Rwy 7-25	

CATEGORY	A	B	C	D
RNAV MDA	520-1	463 (500-1)	NA	
CIRCLING	600-1	543 (600-1)	NA	