

APP CRS	Rwy Idg	<b>4252</b>
<b>325°</b>	TDZE	<b>3560</b>
	Apt Elev	<b>3560</b>

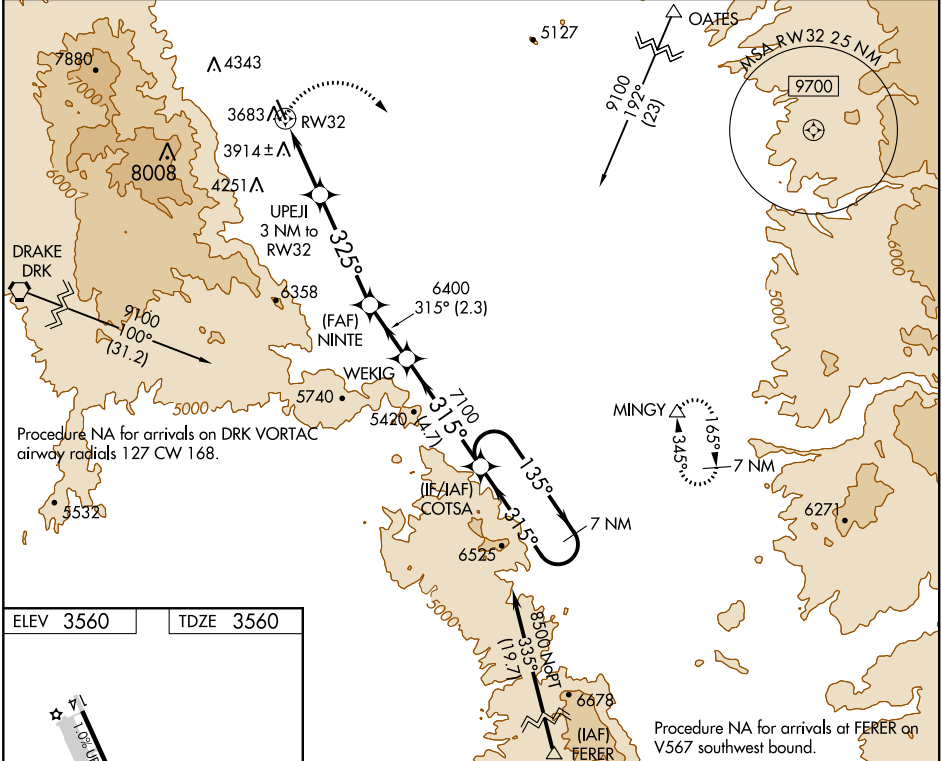
# RNAV (GPS) RWY 32

COTTONWOOD (P52)

**NA** Circling NA southwest of Rwy 14-32. DME/DME RNP-0.3 NA. Procedure NA at night. Helicopter visibility reduction below 1 SM NA. When local altimeter setting not received, use Sedona altimeter setting and increase all MDA 200 feet, increase LNAV and Circling Cat A/B visibility ¼ mile, LNAV Cat C visibility ½ mile, Circling Cat C visibility ¾ mile.

**MISSED APPROACH:** Climbing right turn to 10000 direct MINGY and hold, continue climb-in-hold to 10000.

<b>AWOS-3</b> <b>119.925</b>	<b>PHOENIX APP CON</b> <b>126.375 236.775</b>	<b>UNICOM</b> <b>122.7 (CTAF)</b>
---------------------------------	--	--------------------------------------



10000	MINGY				
		NINTE	WEKIG	COTSA	7 NM Holding Pattern
		UPEJI 3 NM to RW32			
		325°	315°	135°	8500
		4740	7100		
		3.60° TCH 40			
		3 NM	4.3 NM	2.3 NM	4.7 NM
CATEGORY	A	B	C	D	
LNAV MDA	4260-1	700 (700-1)	4260-2	700 (700-2)	NA
CIRCLING	4260-1	700 (700-1)	4260-2	700 (700-2)	NA

SW-4, 10 SEP 2020 to 08 OCT 2020

SW-4, 10 SEP 2020 to 08 OCT 2020