

APP CRS 319°	Rwy Idg 3400
	TDZE 1226
	Apt Elev 1228

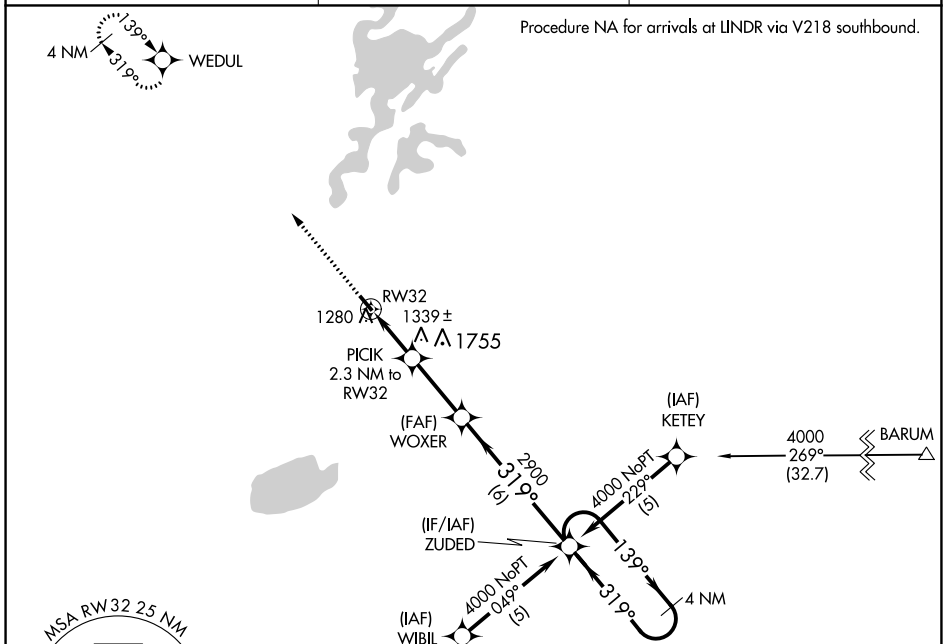
RNAV (GPS) RWY 32

ISEDOR IVERSON (HZZ)

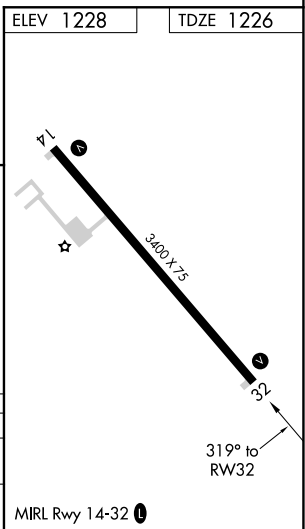
▼ DME/DME RNP-0.3 NA.
When local altimeter setting not received, use Aitkin altimeter setting and increase all MDAs 40 feet.
VDP NA when using Aitkin altimeter setting.

MISSED APPROACH: Climb to 4000 direct WEDUL and hold.

AWOS-3 119.575	MINNEAPOLIS CENTER 127.9 281.45	CTAF 122.9
--------------------------	---	----------------------



4000 WEDUL	VGSI and descent angles not coincident (VGSI Angle 3.00/TCH 19).			4 NM Holding Pattern															
PICIK 2.3 NM to RW32	WOXER	ZUDED																	
1.1 NM to RW32	2000	2900	139°	4000															
1.1 1.3 NM	2.8 NM	6 NM	319°	319°															
<table border="1"> <tr> <th>CATEGORY</th> <th>A</th> <th>B</th> <th>C</th> <th>D</th> </tr> <tr> <td>LNVA MDA</td> <td>1600-1</td> <td>374 (400-1)</td> <td colspan="2">NA</td> </tr> <tr> <td>CIRCLING</td> <td>1660-1 432 (500-1)</td> <td>1700-1 472 (500-1)</td> <td colspan="2">NA</td> </tr> </table>	CATEGORY	A	B	C	D	LNVA MDA	1600-1	374 (400-1)	NA		CIRCLING	1660-1 432 (500-1)	1700-1 472 (500-1)	NA					
CATEGORY	A	B	C	D															
LNVA MDA	1600-1	374 (400-1)	NA																
CIRCLING	1660-1 432 (500-1)	1700-1 472 (500-1)	NA																



NC-1, 10 SEP 2020 to 08 OCT 2020

NC-1, 10 SEP 2020 to 08 OCT 2020