

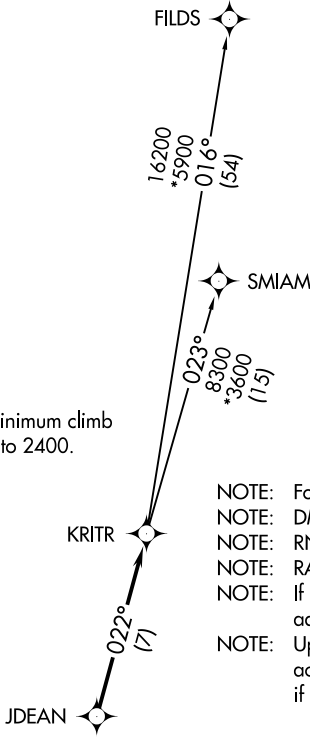
KRTR FIVE DEPARTURE (RNAV)

**TOP ALTITUDE:
3000**

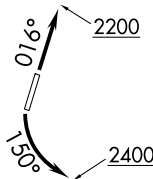
ATIS ★
133.675
CLNC DEL
118.55
CLNC DEL (when twr closed)
127.25
GND CON
121.85
CONCORD TOWER ★
134.65 (CTAF)
UNICOM
122.95
CHARLOTTE DEP CON
128.32 307.8

TAKEOFF MINIMUMS

Rwy 2: Standard.
Rwy 20: Standard with minimum climb
of 320' per NM to 2400.



- NOTE: For turbojets only.
- NOTE: DME/DME/IRU or GPS required.
- NOTE: RNAV 1.
- NOTE: RADAR required.
- NOTE: If unable to accept climb rates, advise ATC on initial contact.
- NOTE: Upon reaching 10000 MSL, accelerate to and maintain 280K, if unable advise ATC.



NOTE: Chart not to scale.

SE-2, 10 SEP 2020 to 08 OCT 2020

SE-2, 10 SEP 2020 to 08 OCT 2020



DEPARTURE ROUTE DESCRIPTION

TAKEOFF RWY 2: Climb heading 016° to 2200, thence. . . .
TAKEOFF RWY 20: Climbing left turn heading 150° to 2400, thence. . . .

. . . .on heading assigned by ATC, expect RADAR vectors to JDEAN, then on track 022° to KRTR, then on assigned transition. Maintain 3000. Expect clearance to filed altitude within 10 minutes after departure.

FILDS TRANSITION (KRTR5.FILDS)
SMIAM TRANSITION (KRTR5.SMIAM)

KRTR FIVE DEPARTURE (RNAV)