

WAAS CH <b>40136</b> <b>W15A</b>	APP CRS <b>182°</b>	Rwy Idg <b>2775</b> TDZE <b>147</b> Apt Elev <b>147</b>
--	------------------------	---

# RNAV (GPS) RWY 15

KINGSTON-ULSTER (20N)

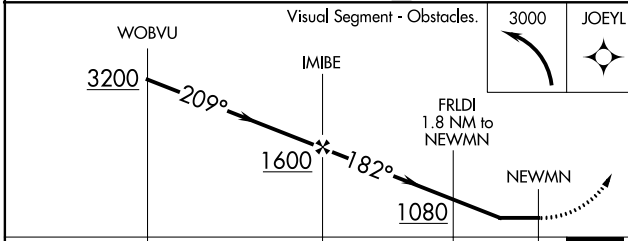
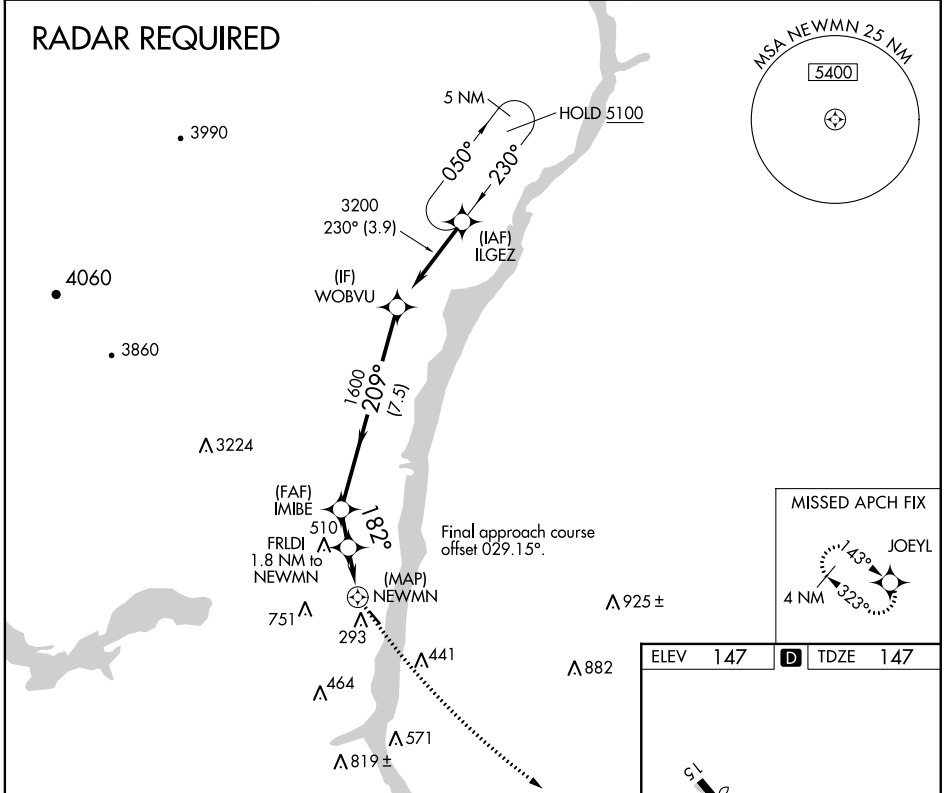
**▼** DME/DME RNP-0.3 NA. Helicopter visibility reduction below 1 SM NA.  
**▲** NA Use Hudson altimeter setting. When not received, use Newburgh altimeter setting and increase all MDA 60 feet. Night landing: Rwy 15 NA.

**MISSED APPROACH:** Climbing left turn to 3000 direct JOEYL and hold.

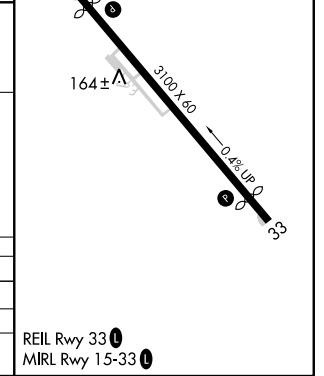
NEW YORK APP CON  
**132.75 363.1**

UNICOM  
**122.8 (CTAF)**

**123.3 0**



CATEGORY	A	B	C	D
LP MDA	720-1	573 (600-1)		NA
LNAV MDA	800-1	653 (700-1)		NA
<b>C</b> CIRCLING	800-1 653 (700-1)	960-1¼ 813 (900-1¼)		NA



NE-2, 10 SEP 2020 to 08 OCT 2020

NE-2, 10 SEP 2020 to 08 OCT 2020