

WAAS CH 53419 W35A	APP CRS 353°	Rwy Idg 12000 TDZE 5434 Apt Elev 5434
--	------------------------	--

RNAV (GPS) Y RWY 35L

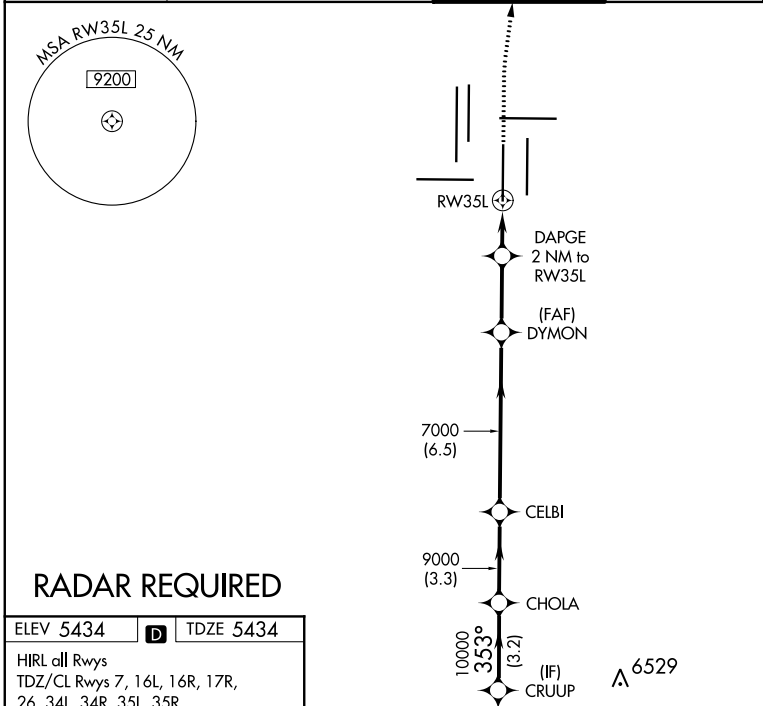
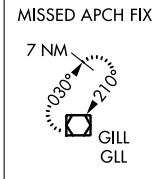
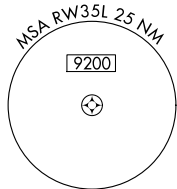
DENVER INTL (DEN)

▼ For uncompensated Baro-VNAV systems, LNAV/VNAV NA below -25°C (-13°F) or above 46°C (115°F). DME/DME RNP-0.3 NA. For inoperative ALSF, increase LNAV/VNAV visibility all Cats to RVR 4000. LNAV procedure NA during simultaneous operations. Simultaneous approach authorized with Rwy 34L, Rwy 34R, and Rwy 35R. Use of FD or AP providing RNAV track guidance required during simultaneous operations.



MISSED APPROACH:
Climb to 10000 then right turn direct GLL VOR/DME and hold.

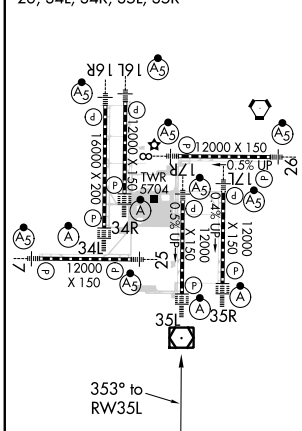
D-ATIS ARR 125.6 379.9 DEP 134.025	DENVER APP CON 119.3 307.3 120.35 379.3 (NORTH) (SOUTH)	DENVER TOWER 133.3 322.45	GND CON 121.85 377.1	CINC DEL 118.75	CPDLC
--	--	-------------------------------------	--------------------------------	---------------------------	-------



RADAR REQUIRED

ELEV 5434	D	TDZE 5434
-----------	---	-----------

HIRL all Rwys
TDZ/CL Rwys 7, 16L, 16R, 17R,
26, 34L, 34R, 35L, 35R



CRUUP	VGSI and RNAV glidepath not coincident (VGSI Angle 3.00°/TCH 71).			10000	GLL
11000	CHOLA	CELBI	DYMON	DAPGE	*LNAV only
10000	9000	7000	7000	2 NM to RW35L	*0.9 NM to RW35L
GP 3.00°	*6120			RW35L	
TCH 57	→ 3.2 NM → 3.3 NM → 6.5 NM → 2.7 NM → 1.1 NM → 0.9				
CATEGORY	A		B	C	D
LPV DA	5634/18		200 (200-½)		
LNAV/VNAV DA	5684/24		250 (300-½)		
LNAV MDA	5780/24		346 (400-½)		5780/30 346 (400-¾)

SW-1, 10 SEP 2020 to 08 OCT 2020

SW-1, 10 SEP 2020 to 08 OCT 2020