

WAAS CH 40428 W25A	APP CRS 263°	Rwy Idg 12000 TDZE 5355 Apt Elev 5434
--	------------------------	--

RNAV (GPS) Y RWY 25

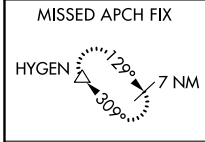
DENVER INTL (DEN)

▼ For uncompensated Baro-VNAV systems, LNAV/VNAV NA below -25°C (-13°F) or above 46°C (116°F). Simultaneous approach authorized with Rwy 26. DME/DME RNP-0.3 NA. Use of FD or AP providing track guidance required during simultaneous operations. LNAV procedure NA during simultaneous operations. For inoperative MALSR, increase LNAV/VNAV all Cats visibility to RVR 4500. # RVR 1800 authorized with use of FD or AP or HUD to DA.

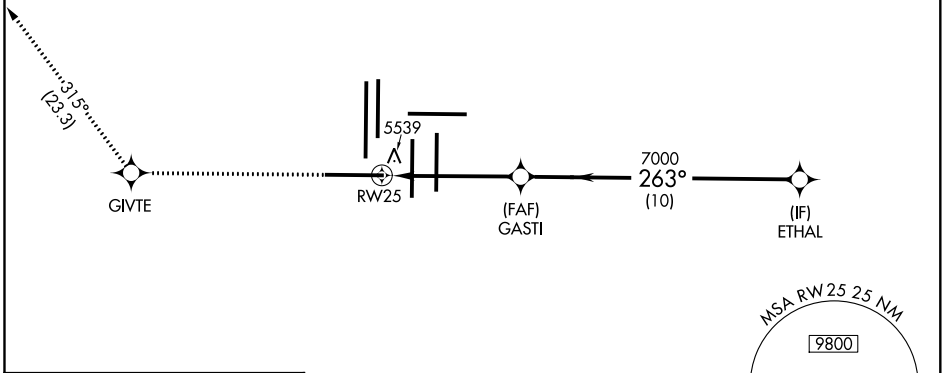
MALSR

MISSED APPROACH: Climb to 10000 direct GIVTE and on track 315° to HYGEN and hold.

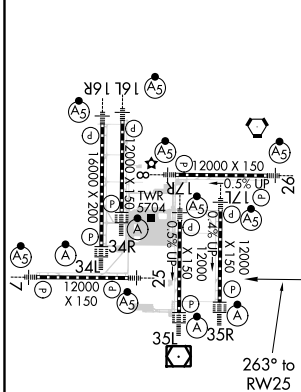
D-ATIS ARR 125.6 379.9 DEP 134.025	DENVER APP CON 119.3 307.3 (NORTH) 120.35 379.3 (SOUTH)	DENVER TOWER 128.75 273.55	GND CON 127.5 379.175	CLNC DEL 118.75	CPDLC
--	---	--------------------------------------	---------------------------------	---------------------------	-------



RADAR REQUIRED

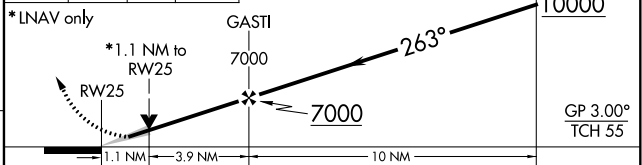


ELEV 5434	D	TDZE 5355
-----------	----------	-----------



HIRL all Rwys
TDZ/CL Rwys 7, 16L, 16R, 17R,
26, 34L, 34R, 35L, 35R

10000	GIVTE	tr 315°	HYGEN	VGSI and RNAV glidepath not coincident (VGSI Angle 3.00/TCH 83).	ETHAL
-------	-------	---------	-------	--	-------



CATEGORY	A	B	C	D
LPV DA #	5555/24		200 (200-½)	
LNAV/VNAV DA	5700/30		345 (300-⅝)	
LNAV MDA	5800/24		5800/45 445 (400-⅞)	

SW-1, 10 SEP 2020 to 08 OCT 2020

SW-1, 10 SEP 2020 to 08 OCT 2020