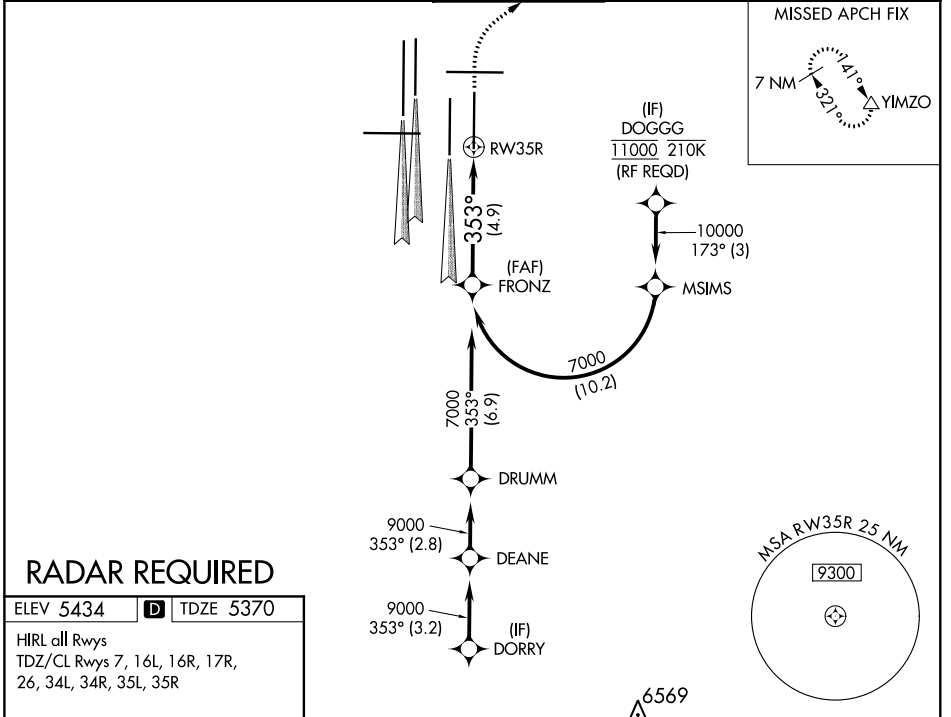


|                        |  |
|------------------------|--|
| APP CRS<br><b>353°</b> | Rwy Idg <b>12000</b><br>TDZE <b>5370</b><br>Apt Elev <b>5434</b> |
|------------------------|--|

# RNAV (RNP) Z RWY 35R

DENVER INTL (DEN)

|   |  |                                       |  |                           |       |
|---|--|---------------------------------------|--|---------------------------|-------|
| <p><b>▽</b> For uncompensated Baro-VNAV systems, procedure NA below -25°C (-13°F) or above 45°C (114°F). GPS required. For inoperative ALSF, increase RNP 0.10 all Cats visibility to RVR 4500 and RNP 0.30 all Cats visibility to RVR 5000. Simultaneous approach authorized. Use of FD or AP providing RNAV track guidance required during simultaneous operations.</p> |  | <p>ALSF-2</p>                         | <p>MISSED APPROACH: Climb to 5900, then climbing right turn to 8000 direct YIMZO and hold.</p> |                           |       |
| D-ATIS<br>ARR <b>125.6 379.9</b><br>DEP <b>134.025</b>  | DENVER APP CON<br><b>119.3 307.3 120.35 379.3</b><br>(NORTH) (SOUTH) | DENVER TOWER<br><b>132.35 239.275</b> | GND CON<br><b>121.85 377.1</b>   | CLNC DEL<br><b>118.75</b> | CPDLC |



## RADAR REQUIRED

|           |          |           |
|-----------|----------|-----------|
| ELEV 5434 | <b>D</b> | TDZE 5370 |
|-----------|----------|-----------|

HIRL all Rwys  
TDZ/CL Rwys 7, 16L, 16R, 17R, 26, 34L, 34R, 35L, 35R

VGSI and RNAV glidepath not coincident (VGSI Angle 3.00/TCH 66).

|          |        |   |       |
|----------|--------|---|-------|
| FRONZ    | 7000   | 353°                                    | RW35R |
| GP 3.00° | TCH 59 | See planview for multiple IF locations. |       |
| 4.9 NM   |        |   |       |

|      |      |       |
|------|------|-------|
| 5900 | 8000 | YIMZO |
| ↑    | ↷    | △     |

| CATEGORY    | A | B       | C             | D |
|-------------|---|---------|---------------|---|
| RNP 0.10 DA |   | 5631/24 | 261 (200-1/2) |   |
| RNP 0.30 DA |   | 5702/32 | 332 (300-5/8) |   |

## AUTHORIZATION REQUIRED

SW-1, 10 SEP 2020 to 08 OCT 2020

SW-1, 10 SEP 2020 to 08 OCT 2020