

RNAV (RNP) Z RWY 34R

DENVER INTL (DEN)

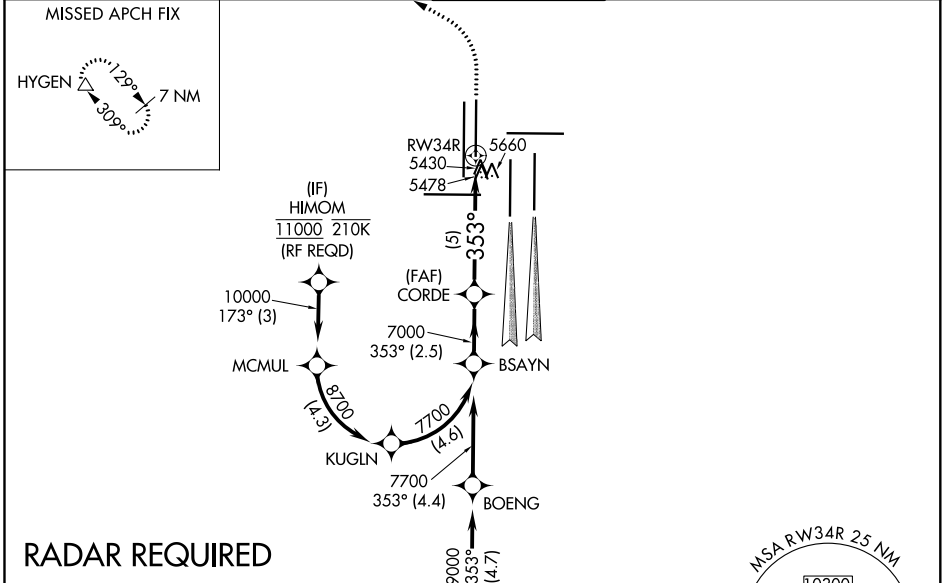
APP CRS 353°	Rwy Idg 12000 TDZE 5354 Apt Elev 5434
------------------------	--

▼ For uncompensated Baro-VNAV systems, procedure NA below -25°C (-13°F) or above 46°C (114°F). GPS required. For inoperative ALSF, increase RNP 0.10 all Cats visibility to RVR 6000 and RNP 0.20 all Cats visibility to 1½ mile and RNP 0.30 all Cats visibility to 2¼ mile. Simultaneous approach authorized. Use of FD or AP providing RNAV track guidance required during simultaneous operations.

ALSF-2

MISSED APPROACH:
Climb to 6000 then climbing left turn to 10000 direct HYGEN and hold.

D-ATIS ARR 125.6 379.9 DEP 134.025	DENVER APP CON 119.3 307.3 (NORTH) 120.35 379.3 (SOUTH)	DENVER TOWER 135.3 351.95	GND CON 127.5 379.175	CLNC DEL 118.75	CPDLC
--	---	-------------------------------------	---------------------------------	---------------------------	-------



SW-1, 10 SEP 2020 to 08 OCT 2020

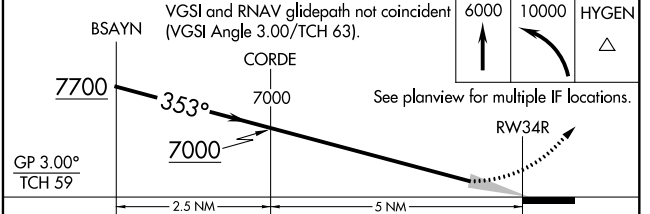
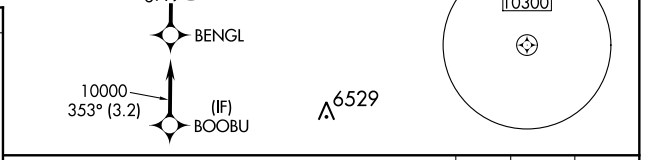
SW-1, 10 SEP 2020 to 08 OCT 2020

RADAR REQUIRED

ELEV 5434	D	TDZE 5354
-----------	----------	-----------

HIRL all Rwys
TDZ/CL Rwys 7, 16L, 16R, 17R, 26, 34L, 34R, 35L, 35R

353° to RWY 34R



CATEGORY	A	B	C	D
RNP 0.10 DA		5739/40	385 (400-¾)	
RNP 0.20 DA		5849/60	495 (500-1¼)	
RNP 0.30 DA		5980-1½	626 (600-1½)	

AUTHORIZATION REQUIRED