


# RNAV (RNP) Z RWY 16L

DENVER INTL (DEN)

APP CRS	Rwy Idg	<b>12000</b>
<b>173°</b>	TDZE	<b>5357</b>
	Apt Elev	<b>5434</b>

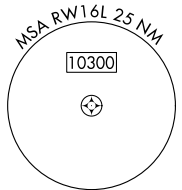
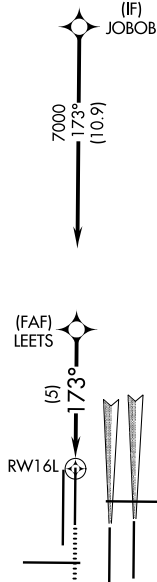
▼ For uncompensated Baro-VNAV systems, procedure NA below -25°C (-13°F) or above 45°C (114°F). GPS required. For inoperative MALSR, increase RNP 0.10 all Cats visibility to RVR 4000 and RNP 0.30 all Cats visibility to RVR 5000. Simultaneous approach authorized. Use of FD or AP providing RNAV track guidance required during simultaneous operations.

MALSR  MISSED APPROACH: Climb to 5900 then climbing right turn to 10000 direct BINBE and hold, continue climb-in-hold to 10000.

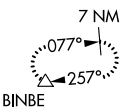
D-ATIS	DENVER APP CON	DENVER TOWER	GND CON	CLNC DEL	CPDLC
ARR <b>125.6 379.9</b>	<b>119.3 307.3 120.35 379.3</b> (NORTH) (SOUTH)	<b>135.3 351.95</b>	<b>127.5 379.175</b>	<b>118.75</b>	
DEP <b>134.025</b>					


## RADAR REQUIRED

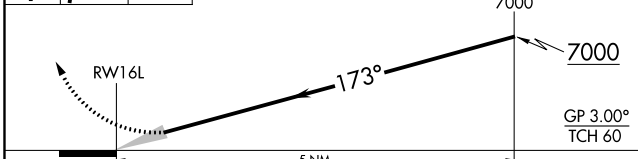
A 6260



### MISSED APCH FIX



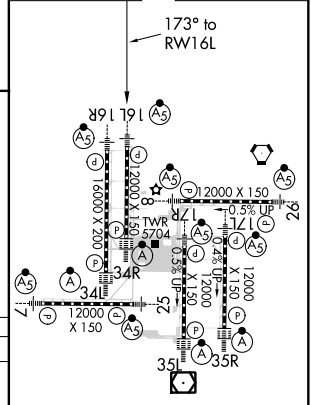
5900 | 10000 | BINBE  VGSI and RNAV glidepath not coincident (VGSI Angle 3.00/TCH 71).



CATEGORY	A	B	C	D
RNP 0.10 DA	5617/24 260 (200-1/2)			
RNP 0.30 DA	5683/32 326 (300-3/4)			

## AUTHORIZATION REQUIRED

ELEV 5434	<b>D</b>	TDZE 5357
-----------	----------	-----------



HIRL all Rwys  
TDZ/CL Rwys 7, 16L, 16R,  
17R, 26, 34L, 34R, 35L, 35R

SW-1, 10 SEP 2020 to 08 OCT 2020

SW-1, 10 SEP 2020 to 08 OCT 2020