

APP CRS	Rwy Idg	2697
140°	TDZE	762
	Apt Elev	773

RNAV (GPS) RWY 14

EPHRAIM-GIBRALTAR (3D2)

RNP APCH.

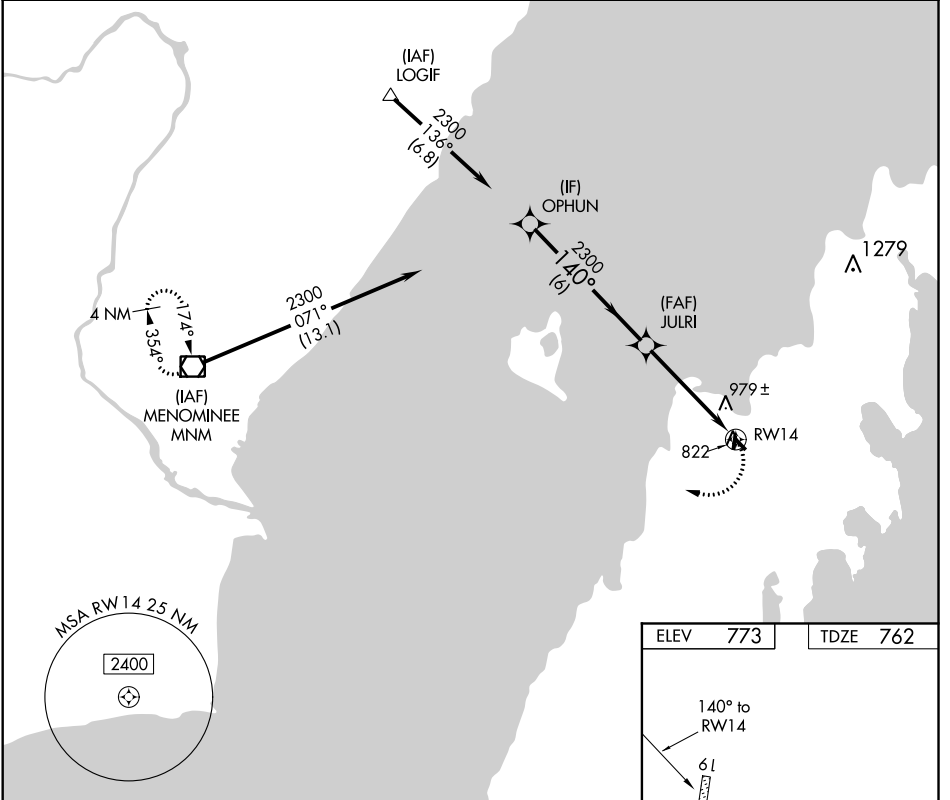
- ▼ Rwy 14 helicopter visibility reduction below 3/4 SM NA. Use Door County Cherryland altimeter setting; when not received, use Menominee altimeter setting and increase all MDA 20 feet.
- ▲ NA

MISSED APPROACH: Climbing right turn to 3000 direct MNM VOR/DME and hold.

AWOS-3PT
124.175

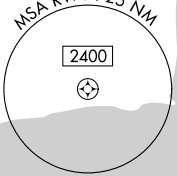
GREEN BAY APP CON★
120.3 338.2

UNICOM
123.0 (CTAF) 0

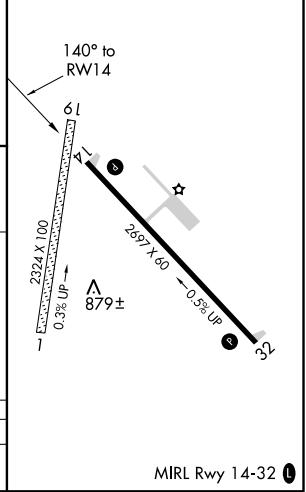


EC-3, 10 SEP 2020 to 08 OCT 2020

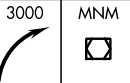
EC-3, 10 SEP 2020 to 08 OCT 2020



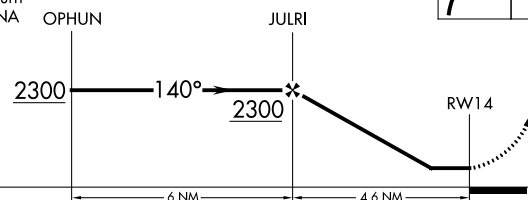
ELEV	773	TDZE	762
------	-----	------	-----



Visual Segment - Obstacles.



Procedure
Turn
NA



CATEGORY	A	B	C	D
LNAV MDA	1300-1	538 (600-1)	1300-1½ 538 (600-1½)	NA

MIRL Rwy 14-32 0