

APP CRS 164°	Rwy Idg TDZE Apt Elev	N/A N/A 1380
------------------------	-----------------------------	---

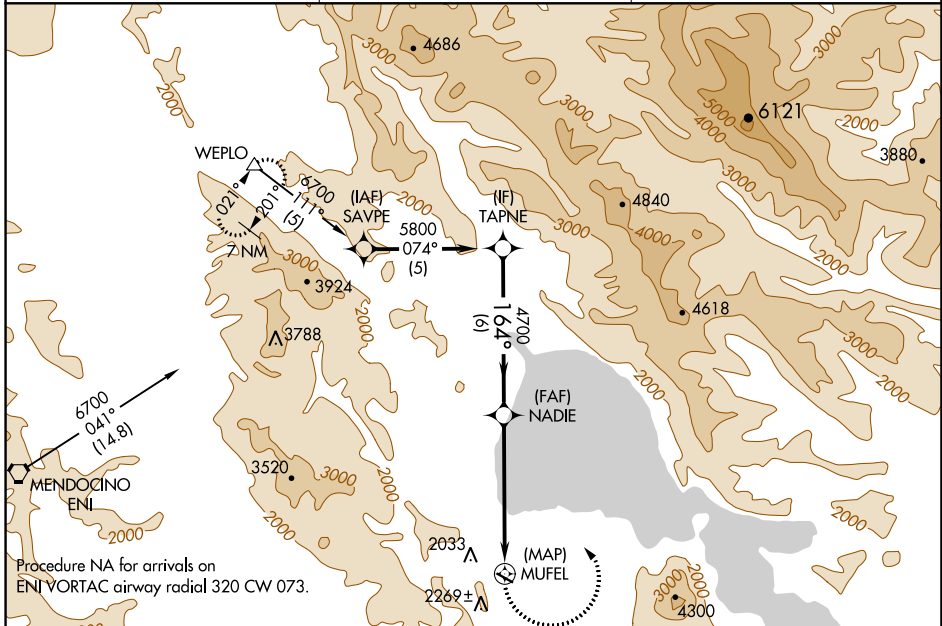
RNAV (GPS)-A

LAMPSON FIELD (102)

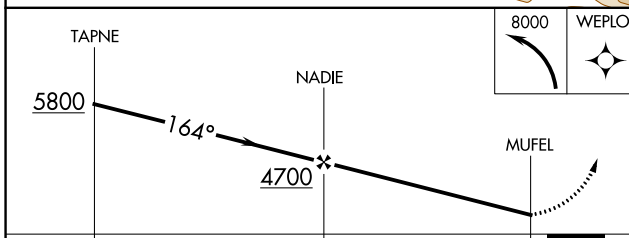
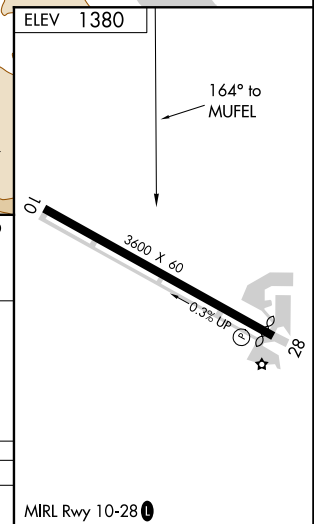
NA Circling NA south of Rwy 10-28. DME/DME RNP-0.3 NA. Procedure NA at night. When local altimeter setting not received, use Ukiah altimeter setting and increase all MDA 560 feet.

MISSED APPROACH: Climbing left turn to 8000 direct WEPLO and hold.

AWOS-3 118.35	OAKLAND CENTER 127.8 353.5	UNICOM 122.8 (CTAF)
-------------------------	--------------------------------------	-------------------------------



Procedure NA for arrivals on ENI VORTAC airway radial 320 CW 073.



CATEGORY	A	B	C	D
CIRCLING	2580-1¼ 1200 (1200-1¼)	2580-1½ 1200 (1200-1½)		NA

MIRL Rwy 10-28

SW-2, 10 SEP 2020 to 08 OCT 2020

SW-2, 10 SEP 2020 to 08 OCT 2020