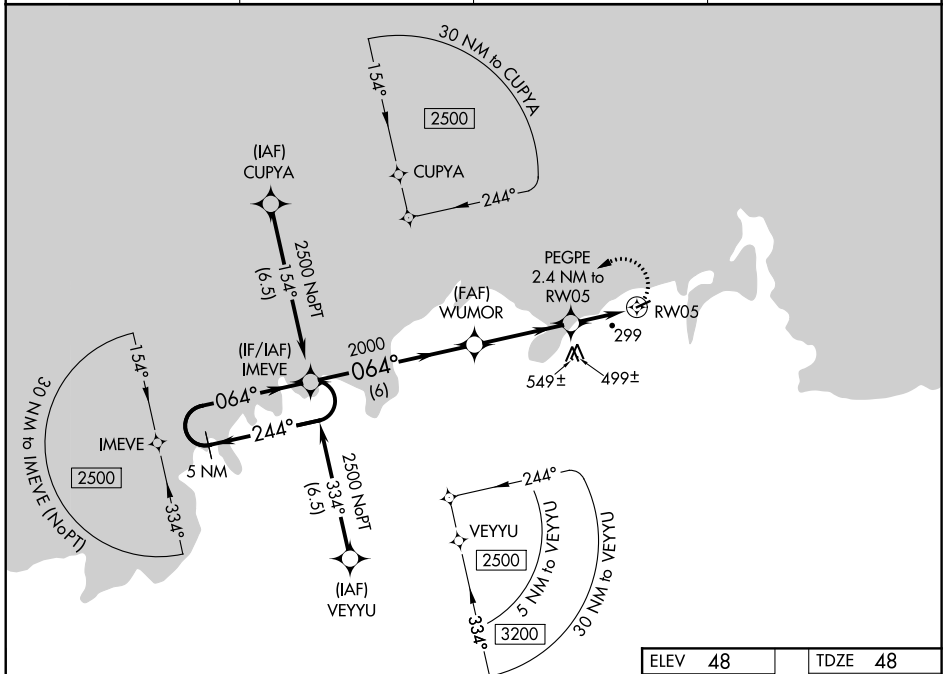


APP CRS	Rwy Idg	3001
064°	TDZE	48
	Apt Elev	48

RNAV (GPS) RWY 5

MEKORYUK (MYU) (PAMY)

<p>⚠ DME/DME RNP-0.3 NA. Visibility reduction by helicopters NA.</p>		<p>MISSED APPROACH: Climbing left turn to 2500 direct IMEVE and hold.</p>	
AWOS-3P	ANCHORAGE CENTER	KENAI RADIO	CTAF
123.9	124.5 372.0	122.0	122.9 0



<p>5 NM Holding Pattern</p> <p>IMEVE</p> <p>WUMOR</p> <p>PEGPE 2.4 NM to RW05</p> <p>RW05</p> <p>3.15° TCH 30</p> <p>880</p> <p>2000</p> <p>2500</p> <p>244°</p> <p>064°</p> <p>064° to RW05</p> <p>3001 X 75</p>				
CATEGORY	A	B	C	D
RNAV MDA	600-1	552 (600-1)	600-1½ 552 (600-1½)	600-1¾ 552 (600-1¾)
CIRCLING	600-1	552 (600-1)	600-1½ 552 (600-1½)	720-2¼ 672 (700-2¼)

ELEV 48	TDZE 48
---------	---------

MIRL Rwy 5-23 0

AK, 10 SEP 2020 to 05 NOV 2020

AK, 10 SEP 2020 to 05 NOV 2020