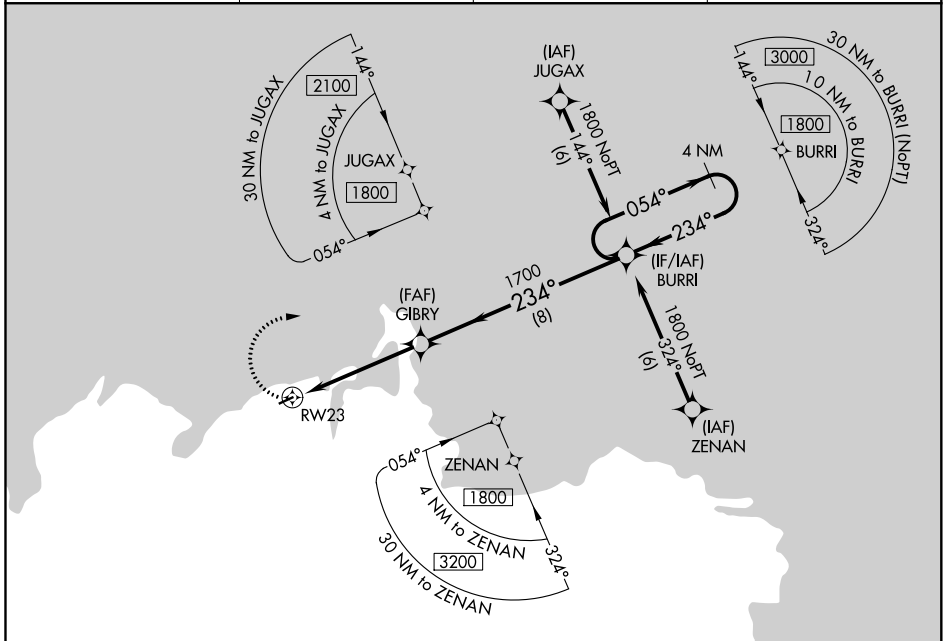


APP CRS 234°	Rwy Idg TDZE Apt Elev	3001 53 53
------------------------	-----------------------------	---------------------------------------

RNAV (GPS) RWY 23

MEKORYUK (MYU) (PAMY)

		MISSED APPROACH: Climbing right turn to 1800 direct BURRI and hold.	
AWOS-3P 123.9	ANCHORAGE CENTER 124.5 372.0	KENAI RADIO 122.0	CTAF 122.9



AK, 10 SEP 2020 to 05 NOV 2020

AK, 10 SEP 2020 to 05 NOV 2020

ELEV 53 TDZE 53	
	BURRI VGSi and descent angle not coincident (VGSi Angle 3.00/ TCH 29).
	GIBRY BURRI 4 NM Holding Pattern
1.6 NM to RWY23 $\leq 3.04^\circ$ TCH 38	054° → 1800 ← 234°
1.6 3.4 NM 8 NM	
CATEGORY	A B C D
LNVA MDA	600-1 547 (600-1) 600-1 $\frac{3}{8}$ 600-1 $\frac{3}{4}$ 547 (600-1%) 547 (600-1%) 547 (600-1%) 547 (600-1%)
CIRCLING	600-1 547 (600-1) 600-1 $\frac{3}{8}$ 720-2 $\frac{1}{4}$ 547 (600-1%) 547 (600-1%) 547 (600-1%) 667 (700-2 $\frac{1}{4}$)

