

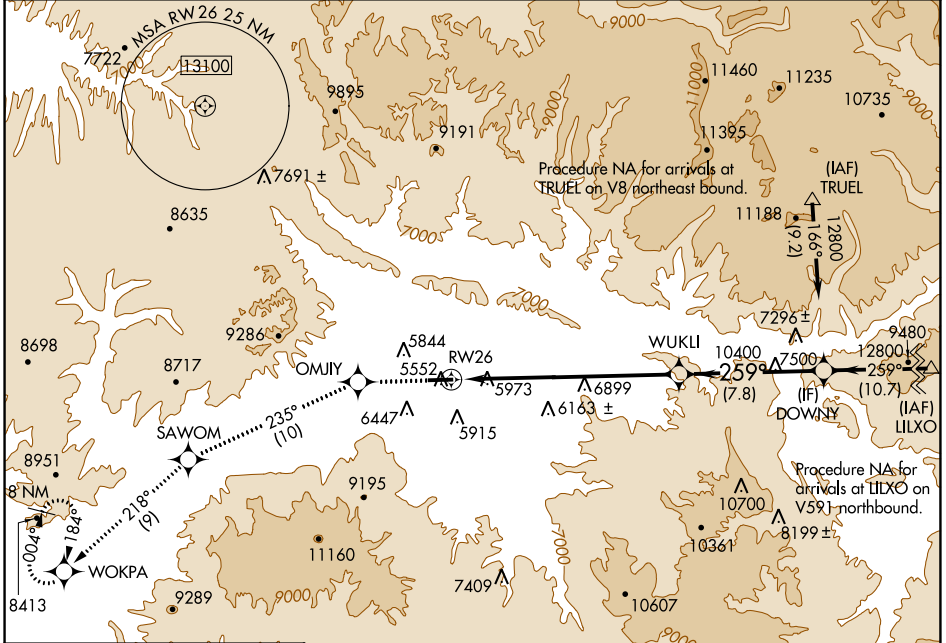
WAAS CH 93708 W26A	APP CRS 259°	Rwy Idg TDZE Apt Elev	7000 5537 5537
--	------------------------	-----------------------------	---

RNAV (GPS) X RWY 26

RIFLE GARFIELD COUNTY (RIL)

NA -14°C	DME/DME RNP- 0.3 NA.	ODALS MISSED APPROACH: Climb to 13000 direct OMJIY and on track 235° to SAWOM and on track 218° to WOKPA and hold, continue climb-in-hold to 13000.
-------------	----------------------	--

ASOS 135.275	DENVER CENTER 134.95 327.075	UNICOM 122.8 (CTAF)
------------------------	--	-------------------------------



SW-1, 10 SEP 2020 to 08 OCT 2020

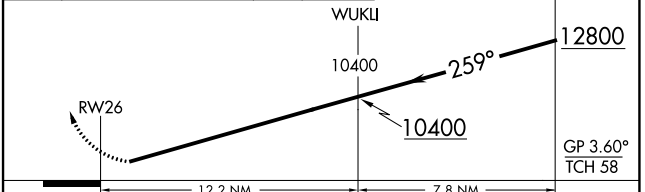
SW-1, 10 SEP 2020 to 08 OCT 2020

ELEV 5537	TDZE 5537
-----------	-----------

Missed approach obstructions require a minimum climb gradient of 290 ft/NM to 9600 feet; if unable to meet climb gradient, see RNAV (GPS) W RWY 26.



13000	OMJIY	tr 235°	SAWOM	tr 218°	WOKPA	DOWNY
-------	-------	---------	-------	---------	-------	-------



HIRL Rwy 8-26	REL Rwy 8 and 26
---------------	------------------

CATEGORY	A	B	C	D
LPV DA	6300-2¼	763 (800-2¼)		NA