

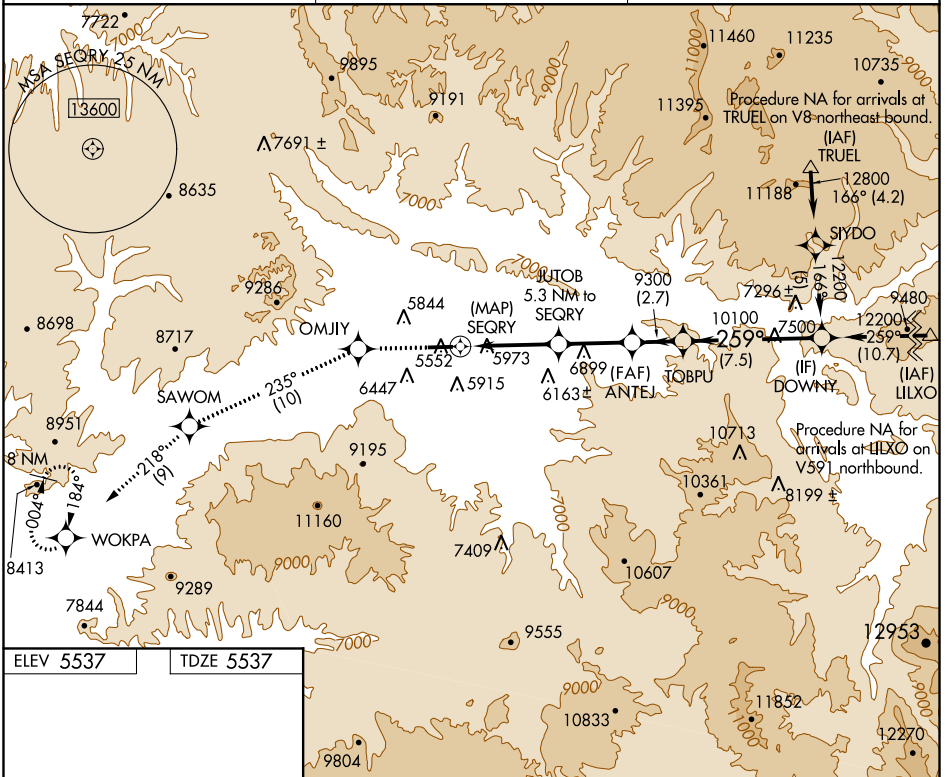
APP CRS	Rwy Idg	<b>7000</b>
<b>259°</b>	TDZE	<b>5537</b>
	Apt Elev	<b>5537</b>

# RNAV (GPS) W RWY 26

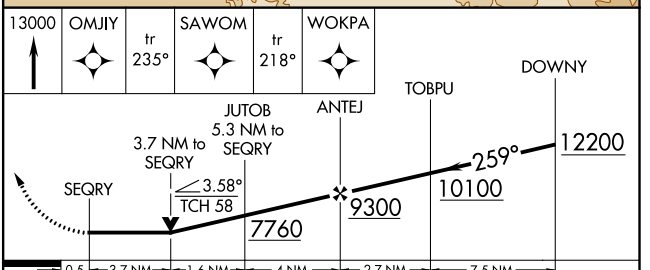
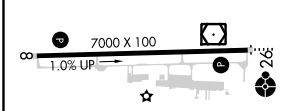
RIFLE GARFIELD COUNTY (R.I.L.)

<p><b>DME/DME RNP-0.3 NA.</b> Visibility reduction by helicopters NA. Circling NA south of Rwy 8-26 at night.</p> <p><b>-1.4°C</b> Inoperative table does not apply.</p>	<p><b>ODALS</b></p>	<p><b>MISSED APPROACH:</b> Climb to 13000 direct OMJY and on track 235° to SAWOM and on track 218° to WOKPA and hold, continue climb-in-hold to 13000.</p>
--	---------------------	--

ASOS <b>135.275</b>	DENVER CENTER <b>134.95 327.075</b>	UNICOM <b>122.8 (CTAF)</b>
------------------------	--	-------------------------------



ELEV 5537	TDZE 5537
-----------	-----------



CATEGORY	A	B	C	D
LNAV MDA	7180-1¼ 1643 (1700-1¼)	7180-1½ 1643 (1700-1½)	7180-3 1643 (1700-3)	NA
<b>C</b> CIRCLING	7180-1¼ 1643 (1700-1¼)	7180-1½ 1643 (1700-1½)	7180-3 1643 (1700-3)	NA

RIFLE, COLORADO  
Amdt 1B 02JAN20

39°32'N-107°44'W

# RNAV (GPS) W RWY 26

SW-1, 10 SEP 2020 to 08 OCT 2020

SW-1, 10 SEP 2020 to 08 OCT 2020