

APP CRS	Rwy Idg	<b>5001</b>
<b>088°</b>	TDZE	<b>1389</b>
	Apt Elev	<b>1395</b>

# RNAV (GPS) RWY 9

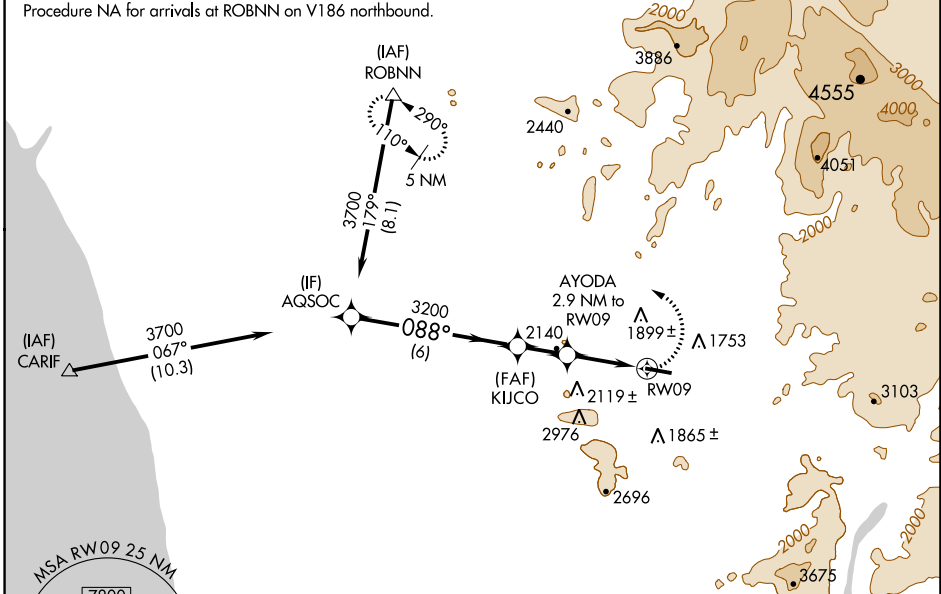
RAMONA (RNM)

**⚠** Circling NA north of Rwy 9-27. DME/DME RNP -0.3 NA. LNAV minima NA when using Gillespie Field altimeter setting. When local altimeter setting not received, use Gillespie Field altimeter setting and increase all Circling MDA 180 feet and increase Circling visibility Cats A and B ¼ mile and Cat C ½ mile. Helicopter visibility reduction below ¾ SM NA.

MISSED APPROACH: Climbing left turn to 5000 direct ROBNN and hold.

ATIS <b>132.025</b>	SOCAL APP CON <b>132.2 269.1</b>	<b>RAMONA TOWER ★</b> <b>119.875 (CTAF) 0</b>	GND CON <b>121.65</b>	UNICOM <b>122.95</b>
------------------------	-------------------------------------	--	--------------------------	-------------------------

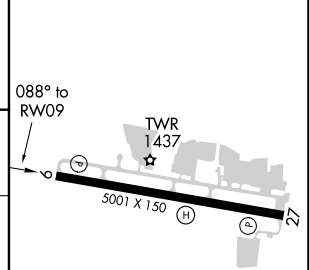
Procedure NA for arrivals at ROBNN on V186 northbound.



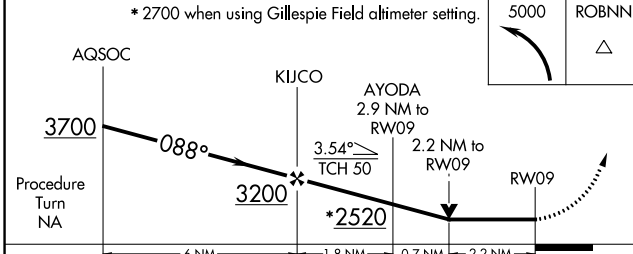
SW-3, 10 SEP 2020 to 08 OCT 2020

SW-3, 10 SEP 2020 to 08 OCT 2020

ELEV 1395	TDZE 1389
-----------	-----------



\* 2700 when using Gillespie Field altimeter setting.



CATEGORY	A	B	C	D
LNAV MDA	2240-1 851 (900-1)	2240-1¼ 851 (900-1¼)	2240-2½ 851 (900-2½)	NA
CIRCLING	2240-1 845 (900-1)	2240-1¼ 845 (900-1¼)	2240-2½ 845 (900-2½)	NA