

APP CRS 254°	Rwy Idg TDZE Apt Elev	N/A N/A 1478
------------------------	-----------------------------	---

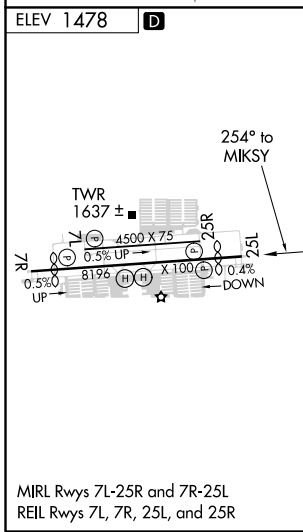
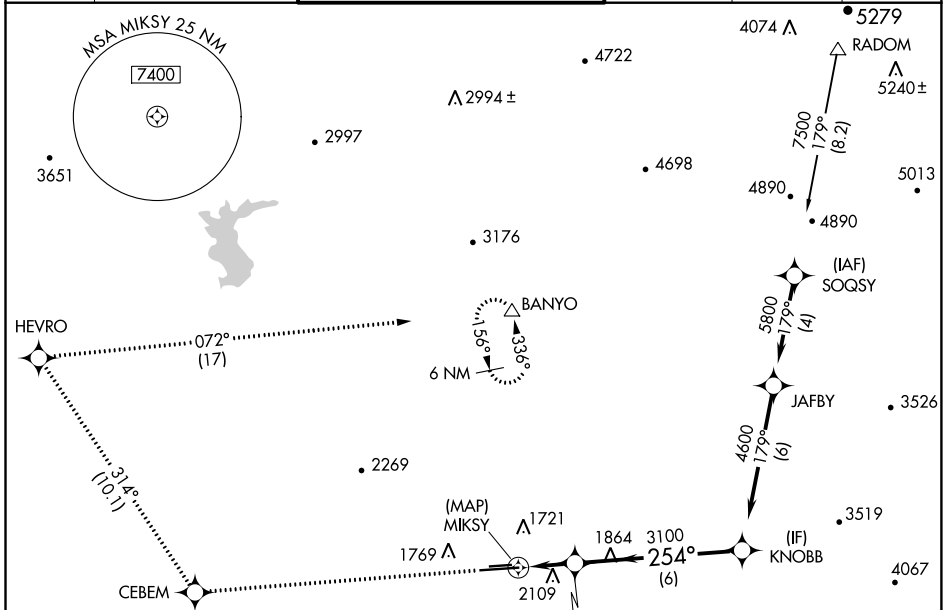
RNAV (GPS)-B

PHOENIX DEER VALLEY (DVT)

⚠ DME/DME RNP-0.3 NA. When VGSI inoperative, Circling to Rwy 25R NA at night. Circling not authorized at right north of Rwy 7R-25L. If local altimeter setting not received, use Phoenix Sky Harbor Intl altimeter setting and increase all MDAs 100 feet.

MISSED APPROACH: Climb to 6000 direct CEBEM and via 314° track to HEVRO, and right turn via 072° track to BANYO and hold.

ATIS 126.5	PHOENIX APP CON 120.7 239.0	DEER VALLEY TOWER ★ 118.4 (070°-250°) (CTAF) 120.2 (251°-069°)	GND CON 121.8	CLNC DEL 123.9	UNICOM 122.95
----------------------	---------------------------------------	--	-------------------------	--------------------------	-------------------------



ELEV 1478	D				
<p>MIRL Rwy 7L-25R and 7R-25L REIL Rwy 7L, 7R, 25L, and 25R</p>		<p>6000</p> <p>CEBEM</p> <p>314° tr</p> <p>HEVRO</p> <p>072° tr</p> <p>BANYO</p> <p>JERGI</p> <p>MIKSY</p> <p>3100</p> <p>4600</p> <p>Procedure Turn NA</p>	<p>2 NM</p> <p>6 NM</p>	<p>2400-1¼</p> <p>2420-1¼</p> <p>2420-2¾</p> <p>NA</p>	
CATEGORY	A	B	C	D	
CIRCLING	2400-1¼ 922 (1000-1¼)	2420-1¼ 942 (1000-1¼)	2420-2¾ 942 (1000-2¾)	NA	

SW-4, 10 SEP 2020 to 08 OCT 2020

SW-4, 10 SEP 2020 to 08 OCT 2020