

| | | | |
|--|------------------------|-----------------------------|---|
| WAAS CH 72917 W07A | APP CRS 074° | Rwy Idg TDZE Apt Elev | 7299 1460 1478 |
|--|------------------------|-----------------------------|---|

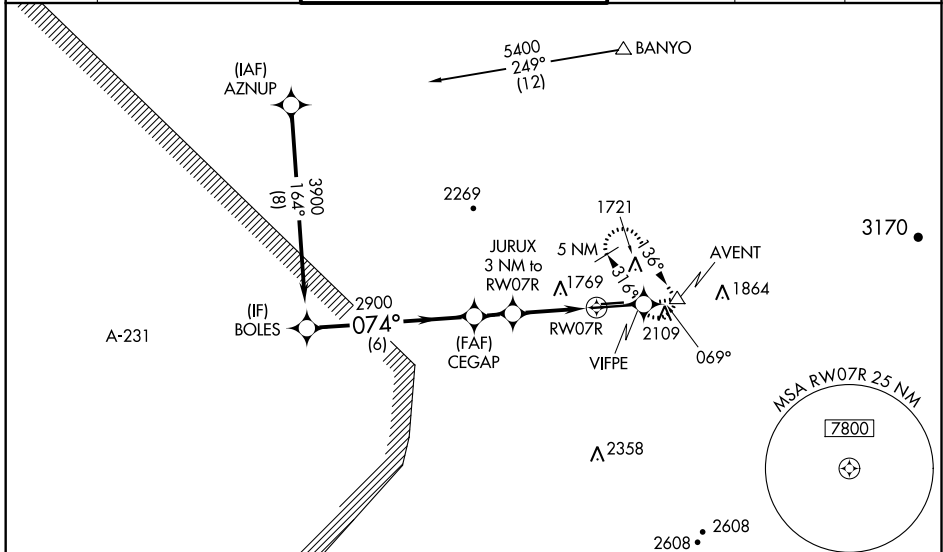
RNAV (GPS) RWY 7R

PHOENIX DEER VALLEY (DVT)

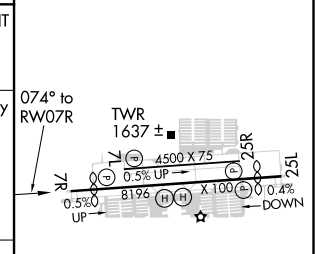
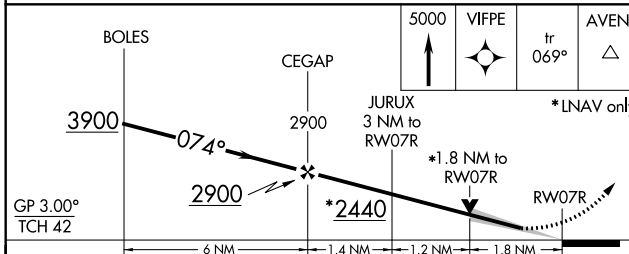
⚠ When VGSI inop, Circling Rwy 25R NA at night. Baro-VNAV NA when using Scottsdale altimeter setting. For uncompensated Baro-VNAV systems, LNAV/VNAV NA below -17°C (2°F) or above 45°C (113°F). DME/DME RNP-0.3 NA. VDP NA when using Scottsdale altimeter setting. When local altimeter setting not received, use Scottsdale altimeter setting: Increase LPV DA to 1822 and all visibilities ½ SM. Increase LNAV/VNAV DA to 2160, increase all MDA's 40 feet and increase Circling Cat B/C visibility ¼ mile. Circling NA north of Rwy 7R-25L at night.

MISSED APPROACH: Climb to 5000 direct VIFPE and track 069° to AVENT and hold, continue climb-in-hold to 5000. When directed by ATC, continue climb-in-hold to 7000.

| | | | | | |
|----------------------|---------------------------------------|---|-------------------------|--------------------------|-------------------------|
| ATIS 126.5 | PHOENIX APP CON 120.7 239.0 | DEER VALLEY TOWER* 118.4 (070°-250°) (CTAF) 120.2 (251°-069°) | GND CON 121.8 | CLNC DEL 123.9 | UNICOM 122.95 |
|----------------------|---------------------------------------|---|-------------------------|--------------------------|-------------------------|



| | |
|-----------|--------------------|
| ELEV 1478 | D TDZE 1460 |
|-----------|--------------------|



| CATEGORY | A | B | C | D |
|--------------|--------------------------------|--------------------------------|--------------------------------|------------------------|
| LPV DA | | 1795-1 1/8 | 335 (400-1 1/8) | |
| LNAV/VNAV DA | | 2133-2 1/2 | 673 (700-2 1/2) | |
| LNAV MDA | 2060-1 | 600 (600-1) | 2060-1 3/4 | 600 (600-1 3/4) |
| CIRCLING | 2400-1 1/4 922 (1000-1 1/4) | 2420-1 1/4 942 (1000-1 1/4) | 2420-2 3/4 942 (1000-2 3/4) | 2460-3 982 (1000-3) |

MIRL Rwy 7L-25R and 7R-25L
REIL Rwy 7L, 7R, 25L, and 25R

SW-4, 10 SEP 2020 to 08 OCT 2020

SW-4, 10 SEP 2020 to 08 OCT 2020