

WAAS CH 90117 W25A	APP CRS 254°	Rwy Idg TDZE Apt Elev	7281 1475 1478
--	------------------------	-----------------------------	---

RNAV (GPS) RWY 25L

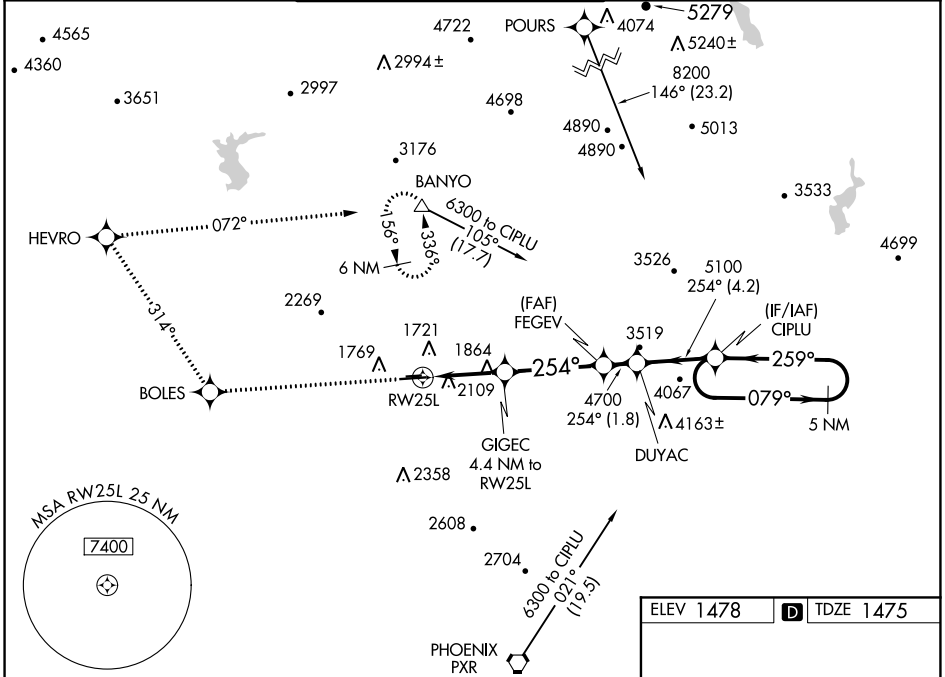
PHOENIX DEER VALLEY (DVT)

RNP APCH

When VGSI inop, Circling to Rwy 25R NA at night. Circling NA north of Rwy 7R-25L at night. When local altimeter setting not received, use Scottsdale altimeter setting; increase LPV all Cats DA to 1877 feet and LPV all Cats visibility ¼ SM. Increase all MDA 40 feet and Circling Cats B and C visibility ¼ SM. Rwy 25L helicopter visibility reduction below ¾ SM NA. VDP NA when using Scottsdale altimeter setting.

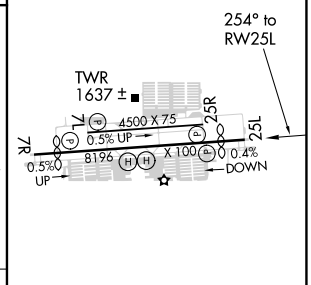
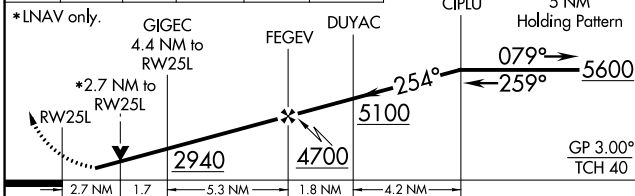
MISSED APPROACH: Climb to 6000 direct BOLES, and via 314° track to HEVRO, and right turn via 072° track to BANYO and hold.

ATIS 126.5	PHOENIX APP CON 120.7 239.0	DEER VALLEY TOWER * 118.4 (070°-250°) (CTAF) 120.2 (251°-069°)	GND CON 121.8	CLNC DEL 123.9	UNICOM 122.95
----------------------	---------------------------------------	--	-------------------------	--------------------------	-------------------------



ELEV 1478	TDZE 1475
-----------	-----------

6000	BOLES	314° tr	HEVRO	072° tr	BANYO
------	-------	---------	-------	---------	-------



CATEGORY	A	B	C	D
LPV DA	1850-1¼		375 (400-1¼)	
LNVA MDA	2360-1¼	885 (900-1¼)	2360-2¾	885 (900-2¾)
CIRCLING	2400-1¼	2420-1¼	2420-2¾	2420-3
	922 (1000-1¼)	942 (1000-1¼)	942 (1000-2¾)	942 (1000-3)

MIRL Rwy 7L-25R and 7R-25L
REIL Rwy 7L, 7R, 25L, and 25R