

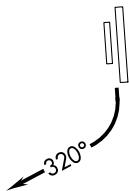
JUDTH SEVEN DEPARTURE (RNAV)

AL-6646 (FAA)

PHOENIX DEER VALLEY (DVT)
PHOENIX, ARIZONA

SW-4, 10 SEP 2020 to 08 OCT 2020

**TOP ALTITUDE:
ASSIGNED BY ATC**



TAKEOFF MINIMUMS

Rwys 7L/R: NA - Obstacles.
 Rwys 25L/R: Standard with minimum climb of 370' per NM to 4600.

NOTE: RNAV 1.

NOTE: Turbojets and turboprops only.

NOTE: RADAR required.

NOTE: GPS required.

NOTE: Aircraft departing KGEU and KGYR ATC assigned only.

- ATIS 126.5
- CLNC DEL 123.9
- GND CON 121.8
- DEER VALLEY TOWER* 118.4 (Rwy 7R-25L)
- 120.2 (Rwy 7L-25R)
- PHOENIX DEP CON 120.7 239.0

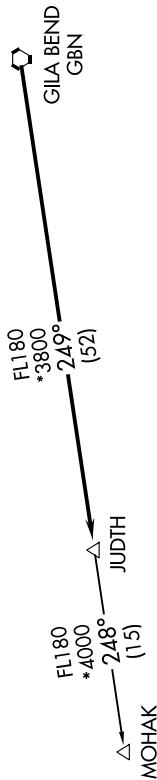
NOTE: Chart not to scale.

DEPARTURE ROUTE DESCRIPTION

TAKEOFF RUNWAYS 25L/R: Climbing right turn heading 320° or as assigned by ATC, thence . . .

. . . expect RADAR vectors to GBN VORTAC, then on track 249° to JUDTH, then on (transition).
 Maintain ATC assigned altitude, expect filed altitude 3 minutes after departure.

MOHAK TRANSITION (JUDTH7..MOHAK)



JUDTH SEVEN DEPARTURE (RNAV)

(JUDTH7..JUDTH) 24MAY18

PHOENIX, ARIZONA
PHOENIX DEER VALLEY (DVT)

SW-4, 10 SEP 2020 to 08 OCT 2020