

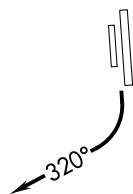
SW-4, 10 SEP 2020 to 08 OCT 2020

ATIS 126.5  
CLNC DEL 123.9  
GND CON 121.8  
DEER VALLEY TOWER\* 118.4 (Rwy 7R-25L)  
120.2 (Rwy 7L-25R)  
PHOENIX DEP CON 120.7 239.0

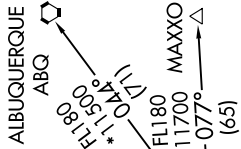
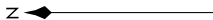
- NOTE: RNAV 1.
- NOTE: Turbojets and turboprops only.
- NOTE: RADAR required.
- NOTE: GPS required.
- NOTE: ABQ transition ATC assigned only.
- NOTE: Aircraft filing over ACH, IBL, ONM, CNX, PNH, MMB, TCC, IRW and TXO file FTHLS DEPARTURE.
- NOTE: Aircraft filing over ABQ, CIM, FTI, and GCK file LALUZ DEPARTURE.
- NOTE: Aircraft filing over DEN, RSK, ALS, and points north of ALS file YOTES DEPARTURE.
- NOTE: Aircraft departing KGEU and KGYR ATC assigned only.

TAKEOFF MINIMUMS

Rwys 7L/R: NA-Obstacles.  
Rwys 25L/R: Standard with minimum climb of 370' per NM to 4600.



**TOP ALTITUDE:  
ASSIGNED BY ATC**



JSSUA



JNIPR



FTHLS



BROAK

**DEPARTURE ROUTE DESCRIPTION**

TAKEOFF RUNWAYS 25L/R: Climbing right turn heading 320° or as assigned by ATC, thence . . .

. . . expect RADAR vectors to BROAK, then on track 059° to FTHLS, then on (transition). Maintain ATC assigned altitude, expect filed altitude 3 minutes after departure.

ALBUQUERQUE TRANSITION (FTHLS6.ABQ)

JNIPR TRANSITION (FTHLS6.JNIPR)

MAXXO TRANSITION (FTHLS6.MAXXO)

NOTE: Chart not to scale.

SW-4, 10 SEP 2020 to 08 OCT 2020