

WAAS CH 53703 W19A	APP CRS 190°	Rwy Idg TDZE Apt Elev	5002 822 822
--	------------------------	-----------------------------	---

RNAV (GPS) RWY 19

INDY SOUTH GREENWOOD (HF'Y)

RNP APCH.

For uncompensated Baro-VNAV systems, LNAV/VNAV NA below -16°C or above 54°C. Baro-VNAV and VDP NA when using Indianapolis Intl altimeter setting. Rwy 19 helicopter visibility reduction below 3/4 SM NA.

ODALS



MISSED APPROACH:
Climb to 3100 direct
GAVYE and hold.

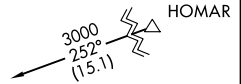
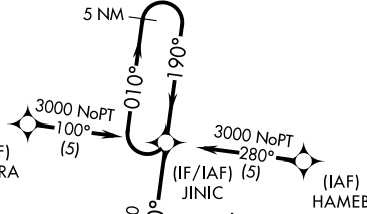
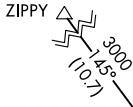
AWOS-3P
118.525

INDIANAPOLIS APP CON
124.95 317.8

GCO
121.725

UNICOM
123.0 (CTAF) 0

Procedure NA for arrivals at ZIPPY on V51-97 northwest bound, and V96-285 northbound.

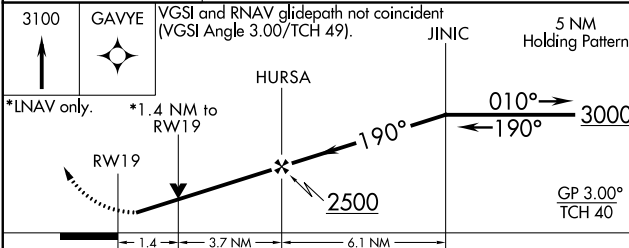
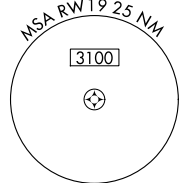
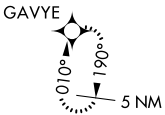


Procedure NA for arrivals at HOMAR on V50 eastbound, and V221 northeast bound.

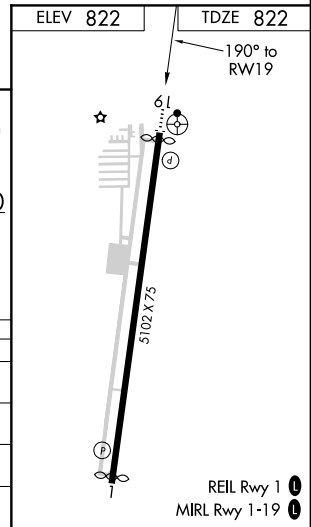
EC-2, 10 SEP 2020 to 08 OCT 2020

EC-2, 10 SEP 2020 to 08 OCT 2020

MISSED APCH FIX



CATEGORY	A	B	C	D
LPV DA	1130-1 308 (400-1)			NA
LNAV/VNAV DA	1299-1 3/4 477 (500-1 3/4)			NA
LNAV MDA	1300-1	478 (500-1)	1300-1 3/8 478 (500-1 3/8)	NA
CIRCLING	1360-1 538 (600-1)	1380-1 558 (600-1)	1380-1 1/2 558 (600-1 1/2)	NA



REIL Rwy 1 0
MIRL Rwy 1-19 0