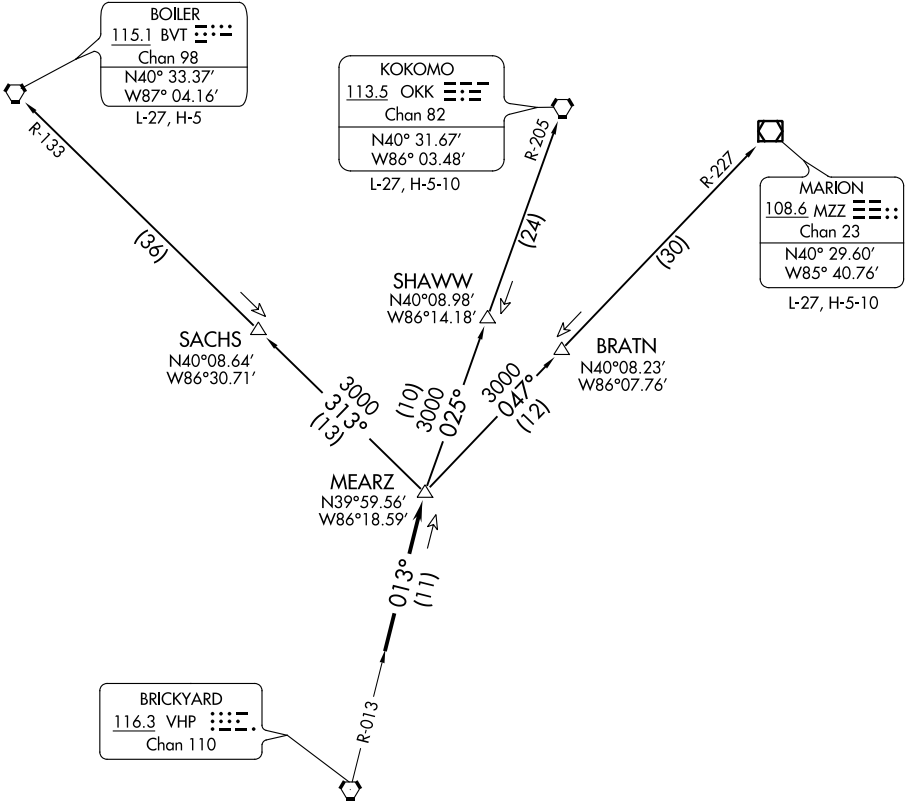


**TOP ALTITUDE:
 ASSIGNED BY ATC**

AWOS-3P
 118.525
 INDIANAPOLIS DEP CON
 124.95 317.8



EC-2, 10 SEP 2020 to 08 OCT 2020

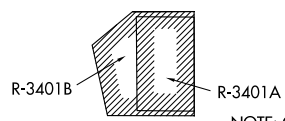
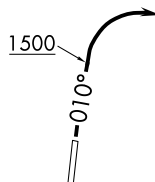
EC-2, 10 SEP 2020 to 08 OCT 2020

TAKEOFF MINIMUMS

Rwy 1, 19: Standard.

- NOTE: RADAR required.
- NOTE: Select appropriate localizer/DME frequency/channel prior to departure.
- NOTE: Turbojets accelerate to 250K until reaching 10000, if unable advise ATC.
- NOTE: Assigned to aircraft with a requested altitude of 11000 or above.

(NARRATIVE ON FOLLOWING PAGE)



NOTE: Chart not to scale.