

WAAS CH 53530 W32A	APP CRS 317°	Rwy Idg TDZE 1082 Apt Elev 1083	3300
--	------------------------	---	-------------

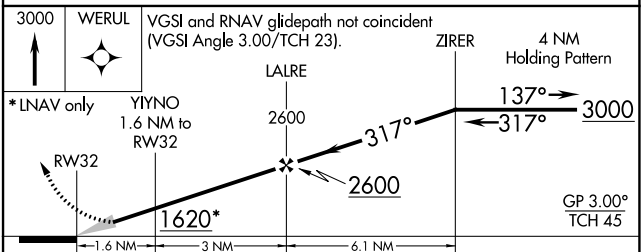
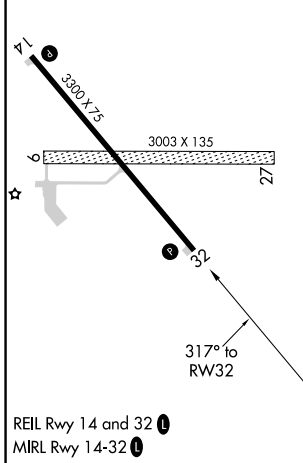
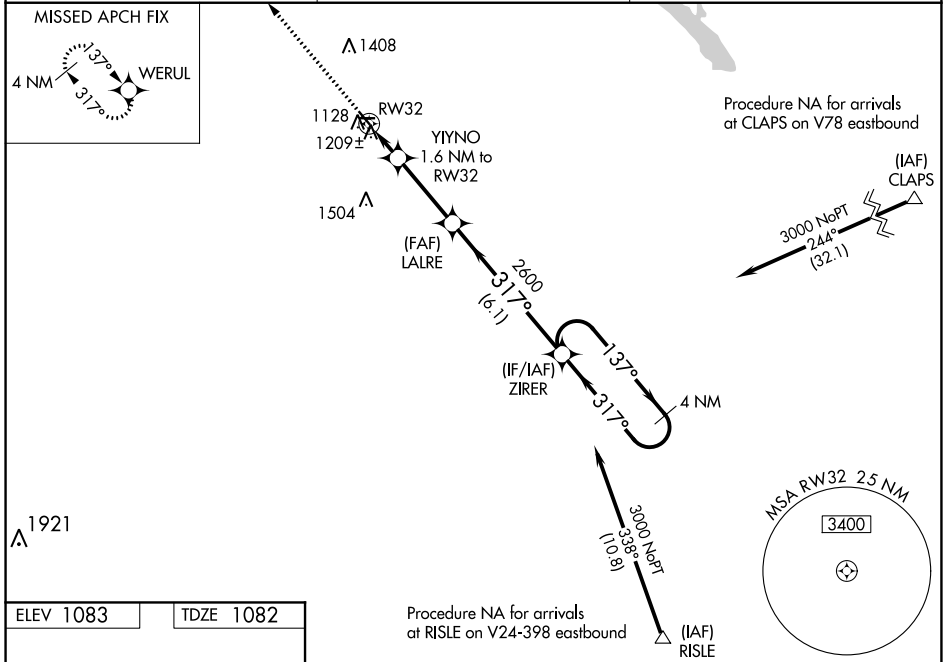
RNAV (GPS) RWY 32

LAC QUI PARLE COUNTY (DXX)

⚠ Baro-VNAV NA when using Appleton Muni altimeter setting. For uncompensated Baro-VNAV systems, LNAV/VNAV NA below -17°C (2°F) or above 54°C (130°F).
⚠ When local altimeter setting not received, use Appleton Muni altimeter setting and increase all DA 46 feet, increase all MDA 60 feet, and visibility LNAV/VNAV all Cats to 1½ mile, LNAV Cat C to 1¾ mile, Circling Cat C to 1¾ mile. DME/DME RNP-0.3 NA.
 Circling NA to Rwy 9 and 27.

MISSED APPROACH: Climb to 3000 direct WERUL and hold.

AWOS-3 118.975	MINNEAPOLIS CENTER 128.5 306.2	UNICOM 122.8 (CTAF) ①
--------------------------	--	---------------------------------



CATEGORY	A	B	C	D
LPV DA	1282-1 200 (200-1)			NA
LNAV/VNAV DA	1363-1 281 (300-1)			NA
LNAV MDA	1460-1	378 (400-1)	1460-1½ 378 (400-1½)	NA
CIRCLING	1640-1	557 (600-1)	1640-1½ 557 (600-1½)	NA

NC-1, 10 SEP 2020 to 08 OCT 2020

NC-1, 10 SEP 2020 to 08 OCT 2020