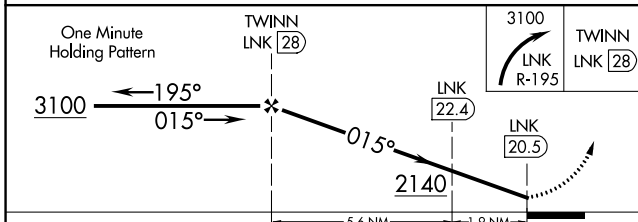
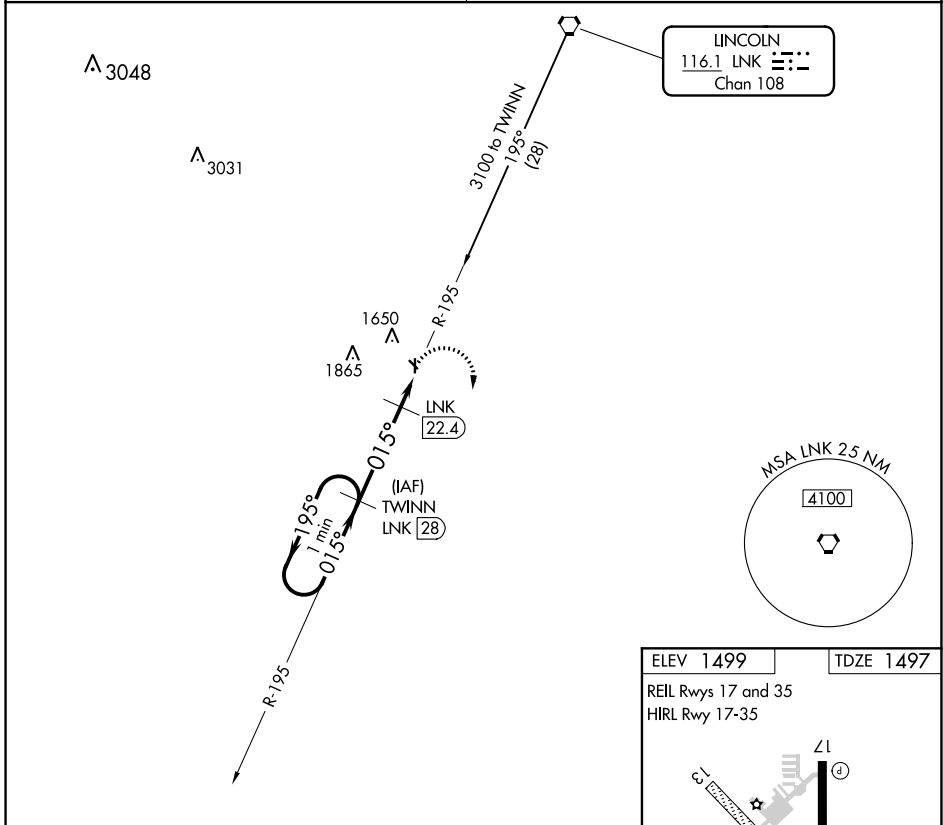


VORTAC LNK <b>116.1</b> Chan <b>108</b>	APP CRS <b>015°</b>	Rwy Idg TDZE <b>1497</b> Apt Elev <b>1499</b>	<b>4201</b>
---	------------------------	---	-------------

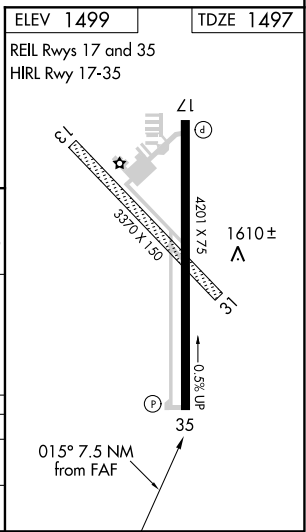
# VOR/DME RWY 35

CRETE MUNI (CEK)

<p><b>NA</b> Use Lincoln altimeter setting; when not received, use Beatrice altimeter setting. Visibility reduction by helicopters NA.</p>	<p>MISSED APPROACH: Climbing right turn to 3100 via LNK R-195 to TWINN/LNK 28 DME and hold.</p>
<p>OMAHA APP CON <b>124.0 270.3</b></p>	<p>UNICOM <b>122.8 (CTAF)</b></p>



CATEGORY	A	B	C	D
S-35	2080-1 583 (600-1)	2080-1¼ 583 (600-1¼)		NA
CIRCLING	2140-1 641 (700-1)	2140-1¼ 641 (700-1¼)		NA



NC-2, 10 SEP 2020 to 08 OCT 2020

NC-2, 10 SEP 2020 to 08 OCT 2020