

WAAS CH <b>86917</b> <b>W05A</b>	APP CRS <b>049°</b>	Rwy Idg TDZE Apt Elev	<b>5105</b> <b>24</b> <b>26</b>
--	------------------------	-----------------------------	---------------------------------------

# RNAV (GPS) RWY 5

CAPE FEAR RGNL JETPORT/HOWIE FRANKLIN FLD (SUT)

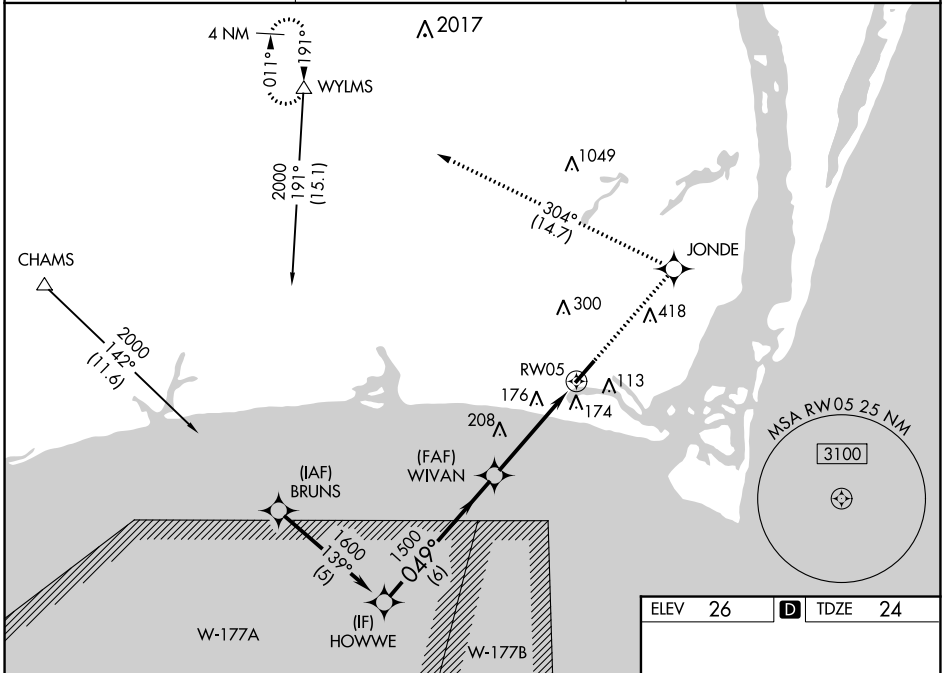
**▼** Baro-VNAV NA when using Wilmington altimeter setting. For uncompensated Baro-VNAV systems, LNAV/VNAV NA below -15°C (5°F) or above 54°C (130°F). DME/DME RNP-0.3 NA. Helicopter visibility reduction below 1 SM NA. When local altimeter setting not received, use Wilmington altimeter setting and increase all DA 53 feet and all MDA 60 feet; increase LNAV/VNAV all Cats visibility ¼ mile. VDP NA when using Wilmington altimeter setting.

**MISSED APPROACH:**  
Climb to 3000 direct JONDE and left turn on track 304° to WYLSM and hold.

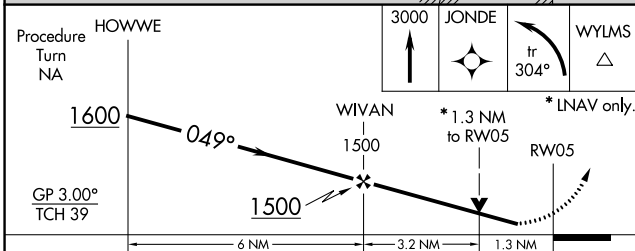
AWOS-3P  
**124.175**

WILMINGTON APP CON ★  
**118.25 284.65**

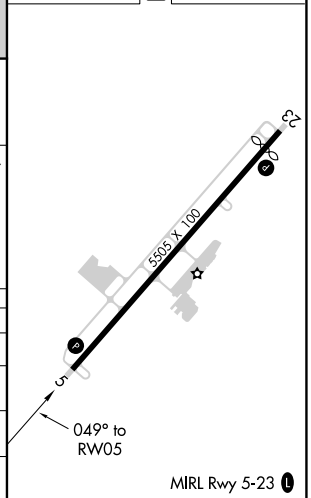
UNICOM  
**123.05 (CTAF) 0**



ELEV 26 **D** TDZE 24



CATEGORY	A	B	C	D
LPV DA	274-1	250 (300-1)		NA
LNAV/VNAV DA	460-1½	436 (500-1½)		NA
LNAV MDA	460-1	436 (500-1)	460-1¼ 436 (500-1¼)	NA
CIRCLING	480-1	454 (500-1)	520-1½ 494 (500-1½)	NA



# RNAV (GPS) RWY 5

SE-2, 10 SEP 2020 to 08 OCT 2020

SE-2, 10 SEP 2020 to 08 OCT 2020

MIRL Rwy 5-23 0