

WAAS CH <b>53629</b> <b>W01A</b>	APP CRS <b>009°</b>	Rwy Idg <b>4407</b> TDZE <b>893</b> Apt Elev <b>898</b>
--	------------------------	---

# RNAV (GPS) RWY 1

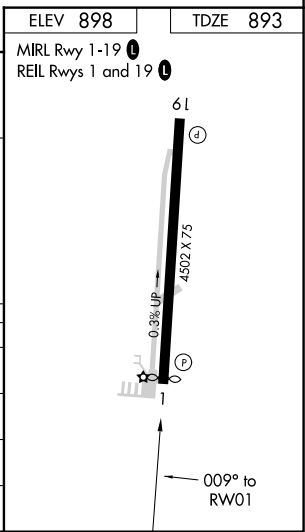
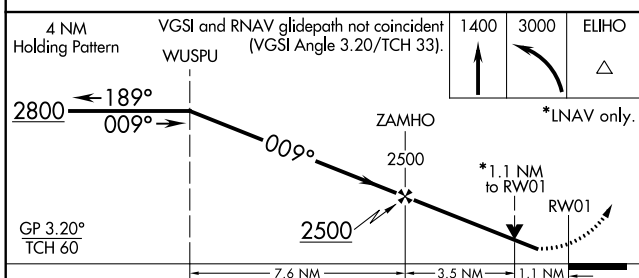
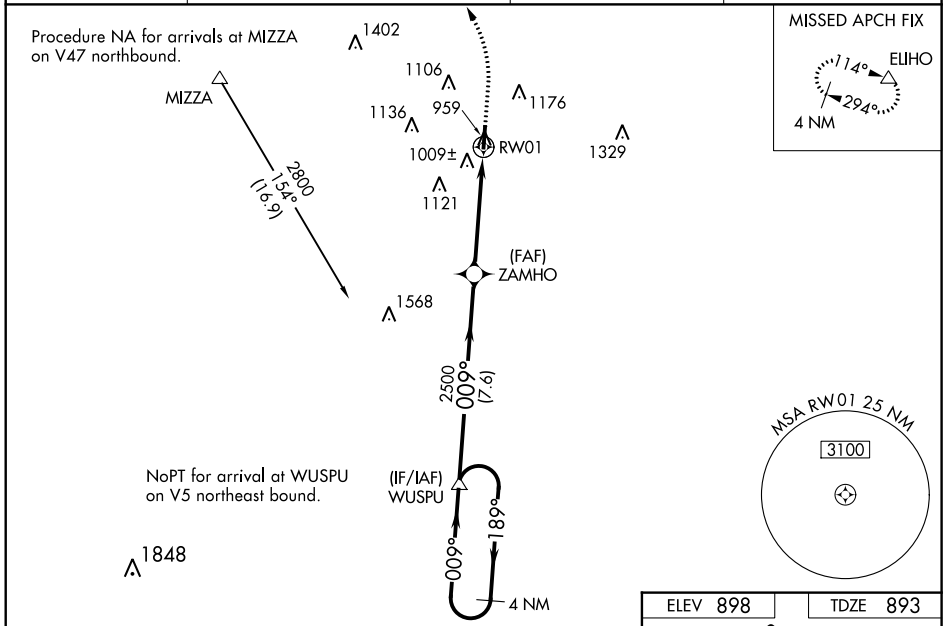
WARREN COUNTY/JOHN LANE FIELD (I68)

**⚠** For uncompensated Baro-VNAV systems, LNAV/VNAV NA below -1.6°C (4°F) or above 54°C (130°F). Baro-VNAV and VDP NA when using Dayton-Wright Brothers altimeter setting. DME/DME RNP-0.3 NA. Rwy 1 helicopter visibility reduction below 3/4 SM NA.

**⚠** NA When local altimeter setting not received use Dayton-Wright Brothers altimeter setting and increase LPV DA to 1183 feet and LNAV/VNAV DA to 1215 and all MDA 40 feet; increase LNAV Cat C/D visibility 1/8 SM and Circling Cat C visibility 1/4 SM. When Circling to Rwy 19 at night, operational VGSI required, remain on or above VGSI glidepath until threshold.

**MISSED APPROACH:**  
Climb to 1400 then climbing left turn to 3000 direct ELIHO and hold.

AWOS-3 <b>120.55</b>	COLUMBUS APP CON <b>118.85 269.275</b>	CLNC DEL <b>119.4</b>	UNICOM <b>123.075 (CTAF)</b>
-------------------------	---	--------------------------	---------------------------------



CATEGORY	A	B	C	D
LPV DA	1157-1	264 (300-1)		NA
LNAV/VNAV DA	1189-1	296 (300-1)		NA
LNAV MDA	1260-1	367 (400-1)		
<b>C</b> CIRCLING	1400-1 502 (600-1)	1480-1 582 (600-1)	1480-1½ 582 (600-1½)	1480-2 582 (600-2)

EC-2, 10 SEP 2020 to 08 OCT 2020

EC-2, 10 SEP 2020 to 08 OCT 2020