

WAAS CH <b>45715</b> <b>W33A</b>	APP CRS <b>333°</b>	Rwy Idg TDZE <b>486</b> Apt Elev <b>488</b>	<b>5002</b> <b>486</b> <b>488</b>
--	------------------------	---	---

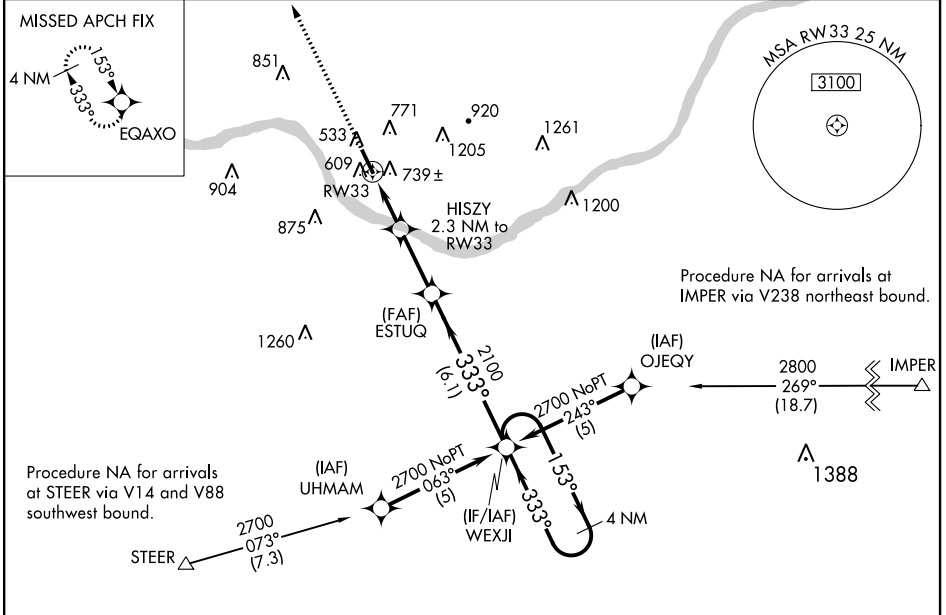
# RNAV (GPS) RWY 33

WASHINGTON RGNL (FYG)

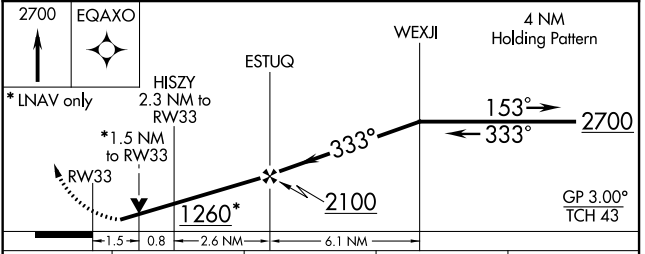
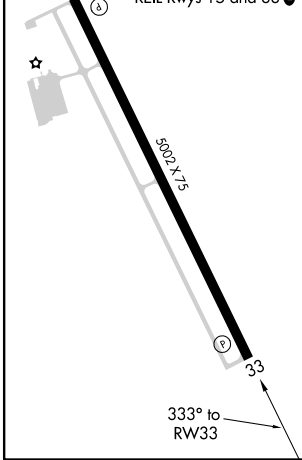
**⚠** For uncompensated Baro-VNAV systems, LNAV/VNAV NA below -15°C (5°F) or above 54°C (130°F). DME/DME RNP-0.3 NA. Visibility reduction by helicopters NA. When local altimeter setting not received, use Spirit of St. Louis altimeter setting and increase all DA 42 feet and all MDA 60 feet, increase LNAV/VNAV all Cats visibility ¼ mile and Circling Cat D visibility ¼ mile. VDP and Baro-VNAV NA when using Spirit of St. Louis altimeter setting.

**MISSED APPROACH:** Climb to 2700 direct EQAXO and hold.

AWOS-3 <b>121.325</b>	ST. LOUIS APP CON <b>126.5 254.3</b>	UNICOM <b>122.8 (CTAF)</b>
--------------------------	---	-------------------------------



ELEV <b>488</b>	TDZE <b>486</b>
MIRL Rwy 15-33	REIL Rwy 15 and 33



CATEGORY	A	B	C	D
LPV DA	824-1¼	338 (400-1¼)		NA
LNAV/VNAV DA	1051-2	565 (600-2)		NA
LNAV MDA	1000-1	514 (600-1)	1000-1½ 514 (600-1½)	NA
CIRCLING	1220-1 732 (800-1)	1260-1¼ 772 (800-1¼)	1260-2¼ 772 (800-2¼)	NA

NC-3, 10 SEP 2020 to 08 OCT 2020

NC-3, 10 SEP 2020 to 08 OCT 2020