

APP CRS 093°	Rwy Idg TDZE Apt Elev	5233 1028 1040
------------------------	-----------------------------	---

RNAV (GPS) RWY 9

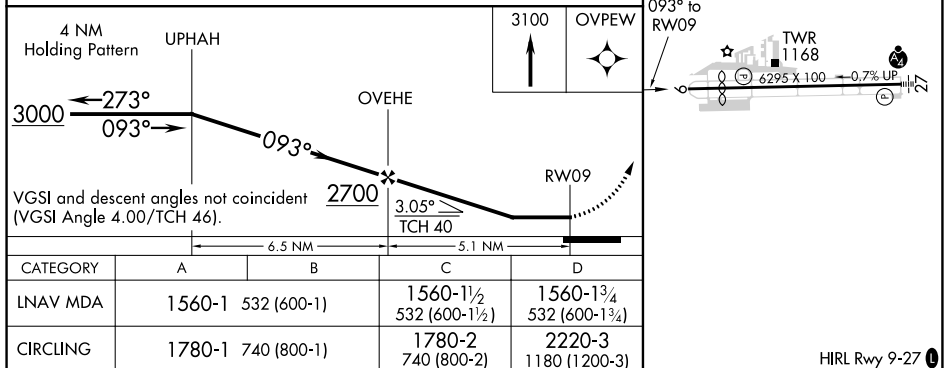
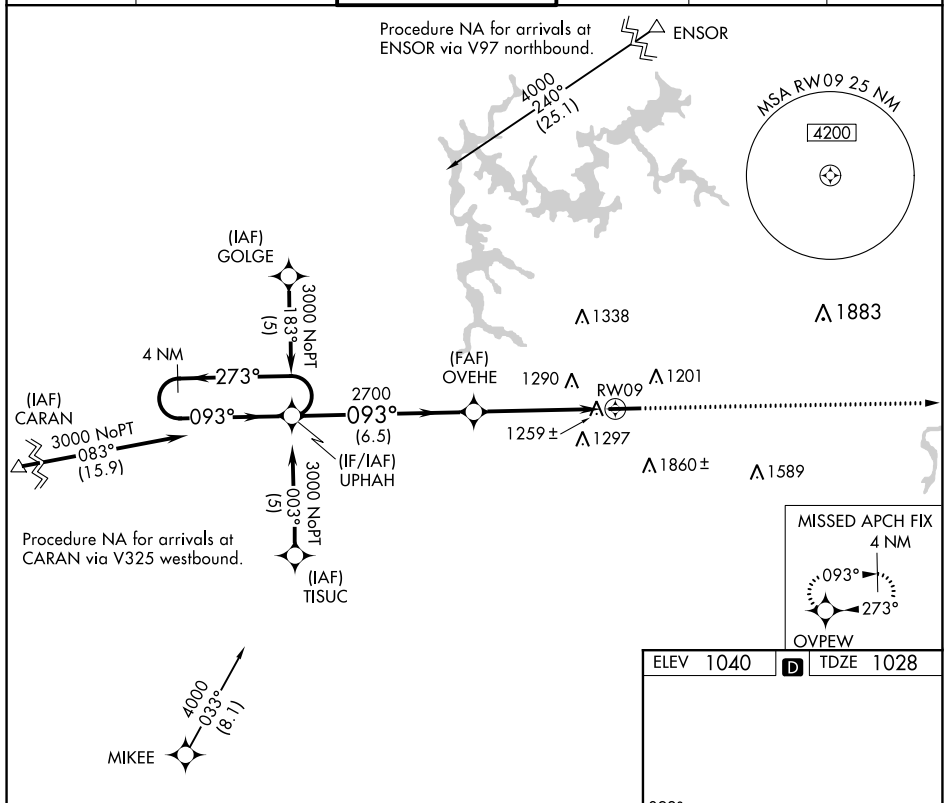
COBB COUNTY INTL-McCOLLUM FIELD (RYY)

▼ DME/DME RNP-0.3 NA. Visibility reduction by helicopters NA. When local altimeter setting not received, use Hartsfield-Jackson Atlanta Intl altimeter

▲ NA setting and increase all MDA 60 feet and Circling Cat. B and C visibility ¼ mile.

MISSED APPROACH: Climb to 3100 direct OVPEW and hold.

ATIS 128.125	ATLANTA APP CON 121.0 268.7	McCOLLUM TOWER * 125.9 (CTAF) 0	GND CON 119.0	CLNC DEL 119.0 268.7	UNICOM 122.7
------------------------	---------------------------------------	---	-------------------------	--------------------------------	------------------------



SE-4, 10 SEP 2020 to 08 OCT 2020

SE-4, 10 SEP 2020 to 08 OCT 2020