

WAAS CH <b>63120</b> <b>W10A</b>	APP CRS <b>094°</b>	Rwy Idg TDZE Apt Elev	<b>5200</b> <b>840</b> <b>840</b>
--	------------------------	-----------------------------	---

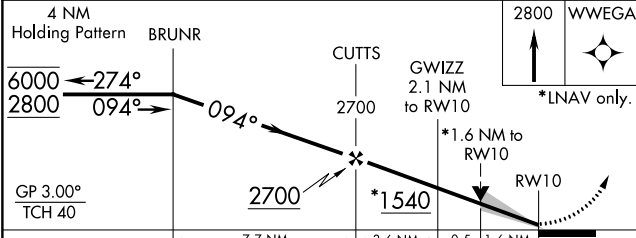
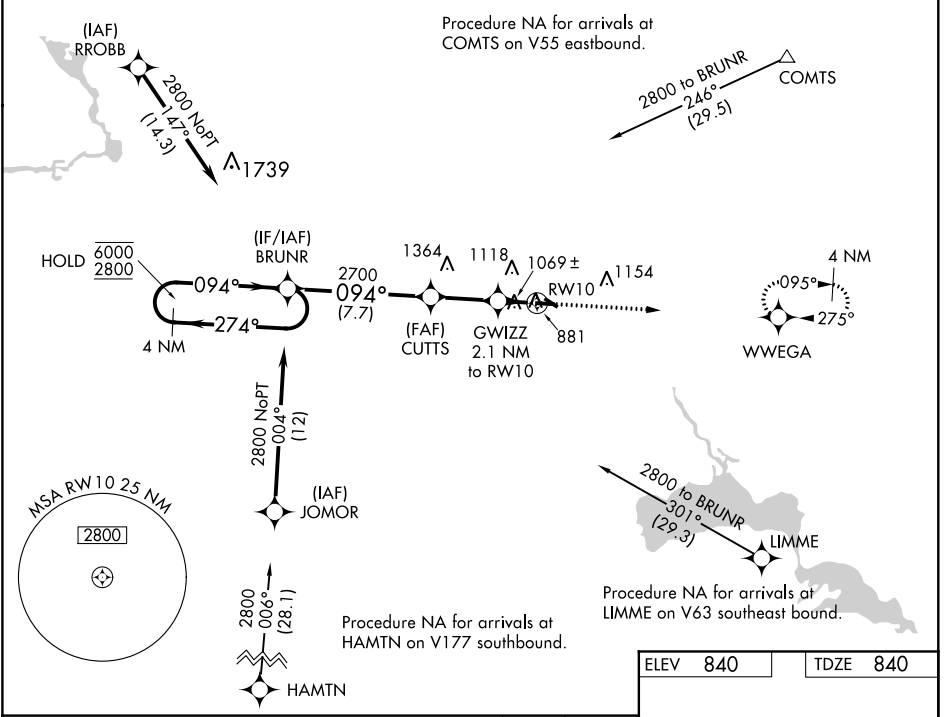
# RNAV (GPS) RWY 10

WAUPACA MUNI (PCZ)

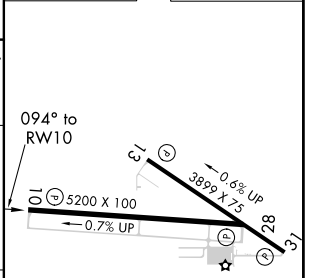
RNP APCH. MISSED APPROACH: Climb to 2800 direct WWEGA and hold.

**▽** Circling to Rwy 28 NA at night. For uncompensated Baro-VNAV systems, LNAV/VNAV NA below -16°C or above 54°C.

AWOS-3 <b>118.625</b>	MINNEAPOLIS CENTER <b>124.4 317.7</b>	UNICOM <b>122.8 (CTAF) 0</b>
--------------------------	--	---------------------------------



ELEV 840	TDZE 840
----------	----------



CATEGORY	A	B	C	D
LPV DA		1090-7/8	250 (300-7/8)	
LNAV/VNAV DA		1384-17/8	544 (600-17/8)	
LNAV MDA	1380-1	540 (600-1)	1380-1 1/2	540 (600-1 1/2)
<b>C</b> CIRCLING	1380-1 540 (600-1)	1420-1 580 (600-1)	1420-1 1/2 580 (600-1 1/2)	1500-2 660 (700-2)

REIL Rwy 10 and 28 **0**  
MIRL Rwy 10-28 and 13-31 **0**

EC-3, 10 SEP 2020 to 08 OCT 2020

EC-3, 10 SEP 2020 to 08 OCT 2020