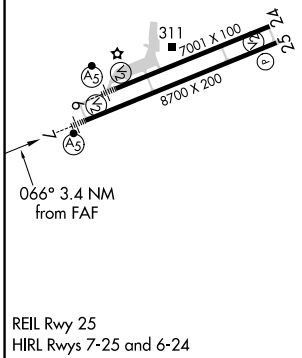
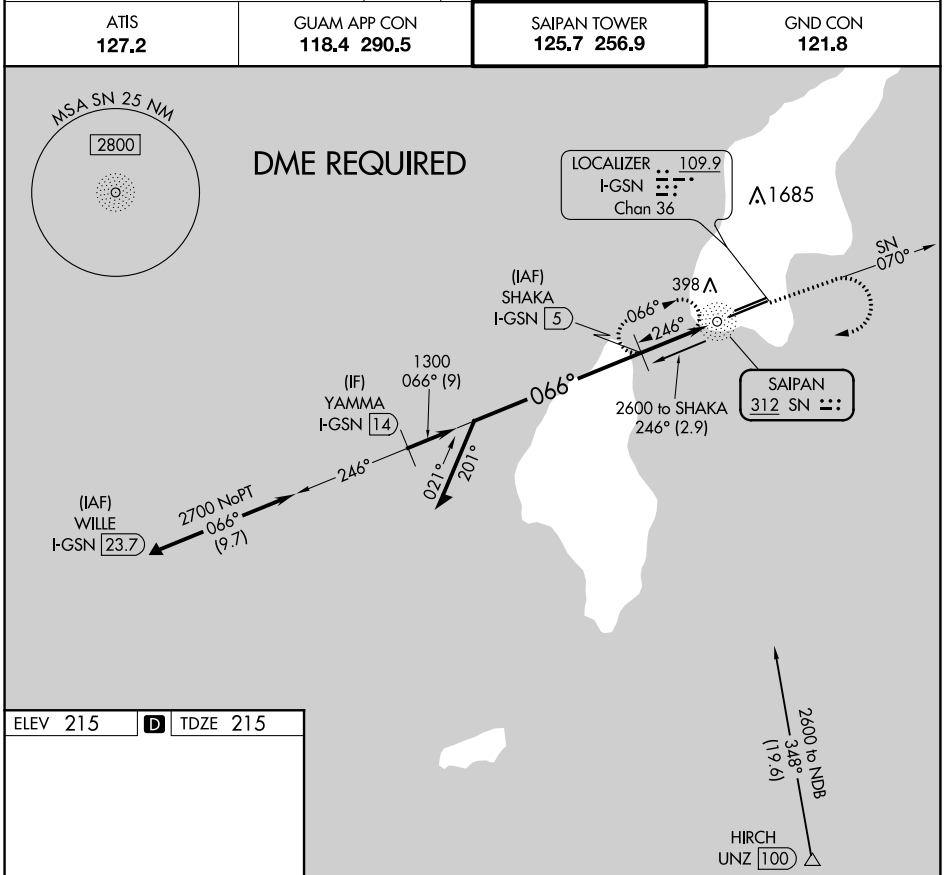


NDB SN 312	APP CRS 066°	Rwy ldg TDZE Apt Elev	8700 215 215
----------------------	------------------------	-----------------------------	---

NDB Z RWY 7

FRANCISCO C ADA/SAIPAN INTL (GSN)(PGSN)

<p>Circling NA north of Rwy 6-24. DME required.</p>	<p>MALSRL</p>	<p>MISSED APPROACH: Climb to 1600 on SN NDB bearing 070° then climbing right turn to 3000 direct SN NDB then on SN NDB bearing 246° to SHAKA/I-GSN 5 DME and hold.</p>	
			<p>ATIS 127.2</p>



<p>Remain within 10 NM</p> <p>2000</p> <p>SHAKA I-GSN 5</p> <p>1600</p> <p>3000</p> <p>SN</p> <p>SHAKA I-GSN 5</p> <p>SN 070°</p> <p>SN 246°</p> <p>2.85° TCH 57</p> <p>1300</p> <p>I-GSN 3</p> <p>SN NDB I-GSN 2.1</p> <p>2 NM</p> <p>0.9 NM</p> <p>0.5</p>	A	B	C	D
	<p>CATEGORY</p>	<p>760-³/₄ 545 (600-³/₄)</p>	<p>760-1¹/₈ 545 (600-1¹/₈)</p>	<p>760-1¹/₈ 545 (600-1¹/₈)</p>
<p>C CIRCLING</p>	<p>760-1 545 (600-1)</p>	<p>760-1¹/₈ 545 (600-1¹/₈)</p>	<p>780-2 565 (600-2)</p>	<p>780-2 565 (600-2)</p>

PAC, 10 SEP 2020 to 05 NOV 2020

PAC, 10 SEP 2020 to 05 NOV 2020