

WAAS CH 90538 W31A	APP CRS 316°	Rwy ldg 3401 TDZE 754 Apt Elev 754
--	------------------------	---

RNAV (GPS) RWY 31

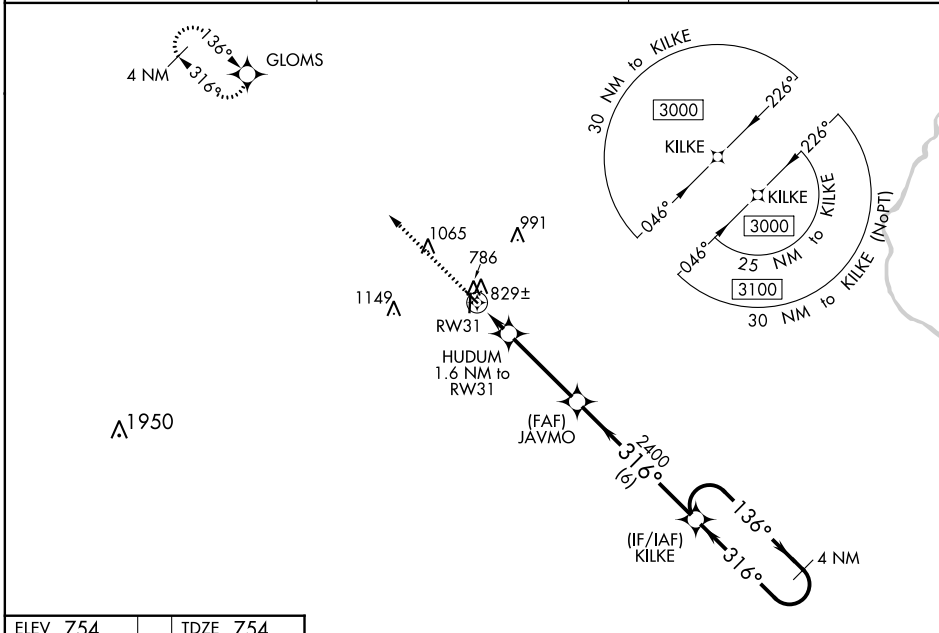
WASHINGTON MUNI (A WG)

RNP APCH.

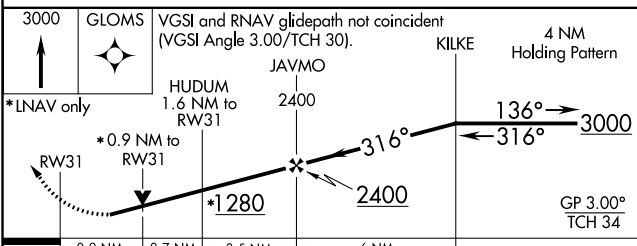
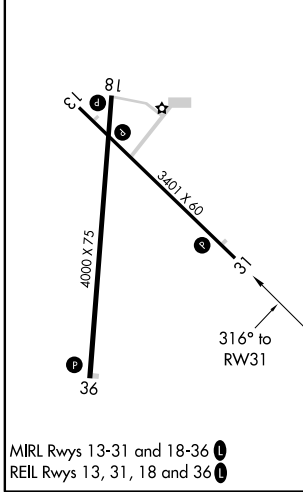
▼ For uncompensated Baro-VNAV systems, LNAV/VNAV NA below -6°C (22°F) or above 54°C (130°F).
▲ Rwy 31 helicopter visibility reduction below ¼ SM NA. Baro-VNAV and VDP NA when using Iowa City altimeter setting. When local altimeter setting not received, use Iowa City altimeter setting: increase LPV and LNAV/VNAV DA to 1066 feet; increase all MDAs 80 feet and visibility LNAV Cat C ¼ SM and Circling Cat C ¼ SM.

MISSED APPROACH:
Climb to 3000 direct GLOMS and hold.

AWOS-3 127.825	CHICAGO CENTER 135.6 370.95	UNICOM 122.7 (CTAF) 0
--------------------------	---------------------------------------	---------------------------------



ELEV 754	TDZE 754
----------	----------



CATEGORY	A	B	C	D
LPV DA		1004-1 250 (300-1)		NA
LNAV/VNAV DA		1004-1 250 (300-1)		NA
LNAV MDA		1080-1 326 (400-1)		NA
C CIRCLING	1200-1 446 (500-1)	1260-1 506 (600-1)	1500-2¼ 746 (800-2¼)	NA

NC-3, 10 SEP 2020 to 08 OCT 2020

NC-3, 10 SEP 2020 to 08 OCT 2020