

WAAS CH 63138 W13A	APP CRS 136°	Rwy ldg 3401 TDZE 754 Apt Elev 754
--	------------------------	---

RNAV (GPS) RWY 13

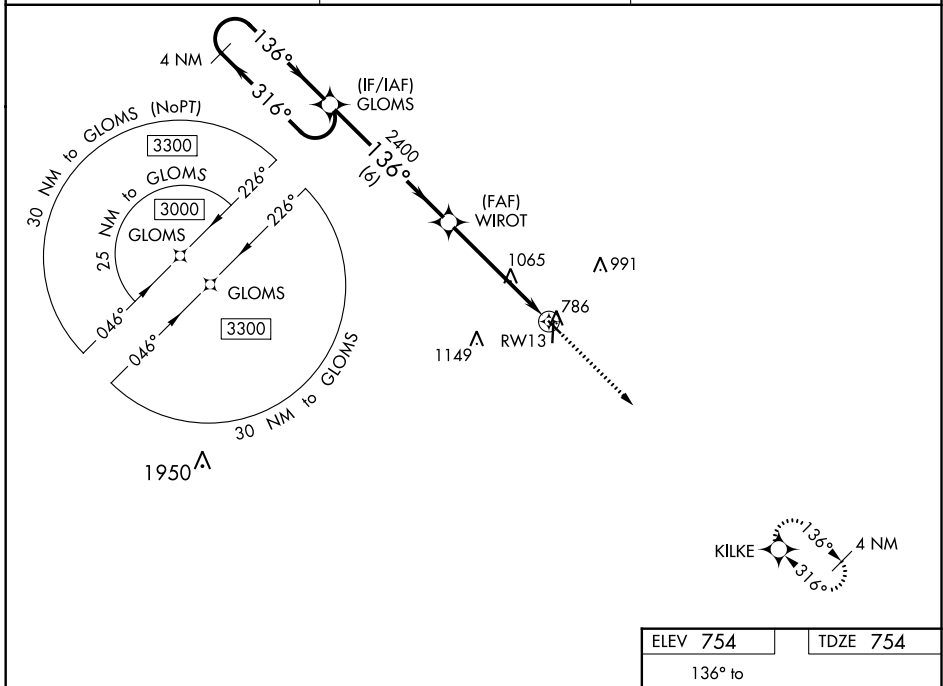
WASHINGTON MUNI (AWG)

RNP APCH.

▼ For uncompensated Baro-VNAV systems, LNAV/VNAV NA below -6°C (22°F) or above 54°C (130°F).
 ▲ Baro-VNAV and VDP NA when using Iowa City altimeter setting. When local altimeter setting not received, use Iowa City altimeter setting: increase LPV DA to 1066 feet, LNAV/VNAV DA to 1282 feet; increase all MDAs 80 feet and visibility LNAV and Circling Cat C ¼ SM.

MISSED APPROACH: Climb to 3000 direct KILKE and hold.

AWOS-3 127.825	CHICAGO CENTER 135.6 370.95	UNICOM 122.7 (CTAF) 0
--------------------------	---------------------------------------	---------------------------------



NC-3, 10 SEP 2020 to 08 OCT 2020

NC-3, 10 SEP 2020 to 08 OCT 2020

4 NM Holding Pattern		GLOMS		3000		KILKE	
← 316°		→ 136°		→ 136°		*LNAV only	
GP 3.00° TCH 37'		2400		*1.7 NM to RWY 13		RWY 13	
6 NM		3.4 NM		1.7 NM		4000 X 75	
CATEGORY	A	B	C	D	ELEV 754 TDZE 754		
LPV DA	1004-1 250 (300-1)			NA	136° to RWY 13		
LNAV/VNAV DA	1220-1 5/8 466 (500-1 5/8)			NA	81		
LNAV MDA	1320-1 566 (600-1)		1320-1 5/8 566 (600-1 5/8)		3401 X 30		
CIRCLING	1320-1 566 (600-1)		1500-2 1/4 746 (800-2 1/4)		36		
					MIRL Rwy 13-31 and 18-36 0 REIL Rwy 13, 31, 18 and 36 0		