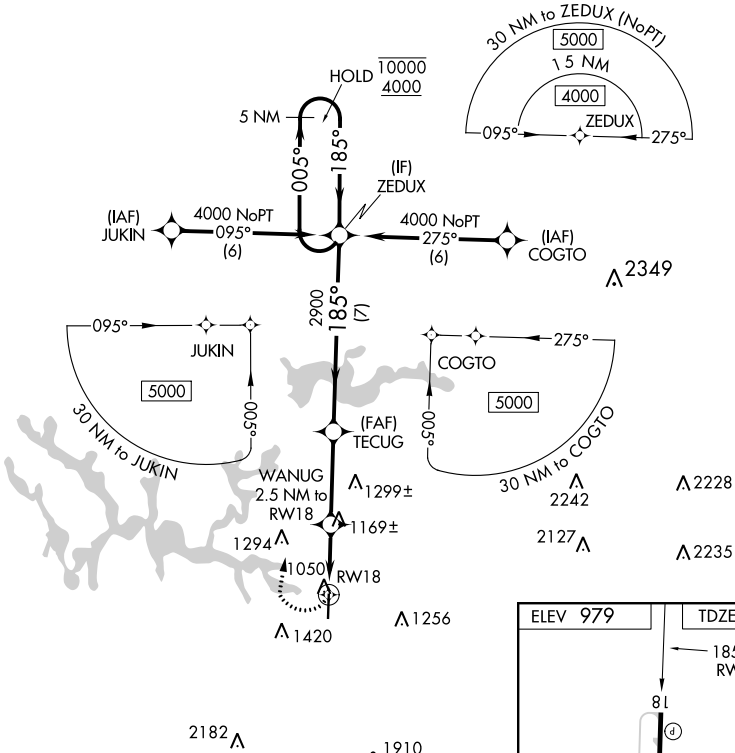


APP CRS	Rwy Idg	<b>5003</b>
<b>185°</b>	TDZE	<b>978</b>
	Apt Elev	<b>979</b>

# RNAV (GPS) Y RWY 18

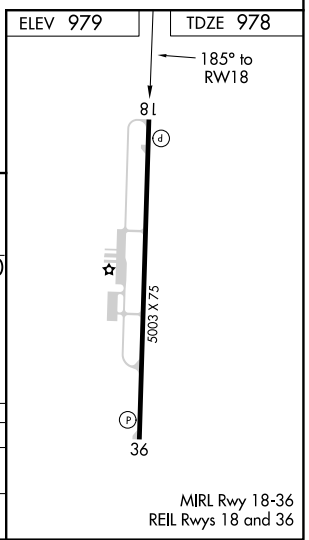
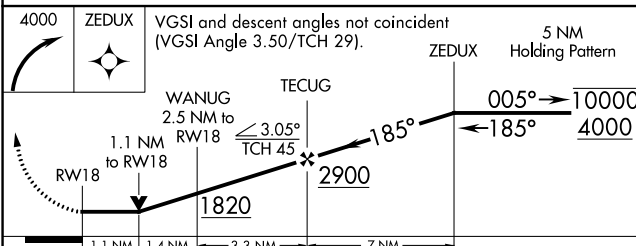
WINCHESTER MUNI (BGF)

RNP APCH.		MISSED APPROACH: Climbing right turn to 4000 direct ZEDUX and hold.	
Rwy 18 helicopter visibility reduction below 3/4 SM NA.		AWOS-3 <b>121.675</b>	MEMPHIS CENTER <b>128.15 323.125</b>
		GCO <b>121.725</b>	UNICOM <b>122.8 (CTAF)</b>



SE-1, 10 SEP 2020 to 08 OCT 2020

SE-1, 10 SEP 2020 to 08 OCT 2020



CATEGORY	A	B	C	D
LNVA MDA	1420-1	442 (500-1)	1420-1¼ 442 (500-1¼)	1420-1½ 442 (500-1½)
CIRCLING	1460-1	481 (500-1)	1540-1½ 561 (600-1½)	1780-2½ 801 (900-2½)

MIRL Rwy 18-36  
REIL Rwy 18 and 36