

VORTAC PLN 111.8 Chan 55	APP CRS 082°	Rwy Idg 4005 TDZE 640 Apt Elev 640
--	------------------------	---

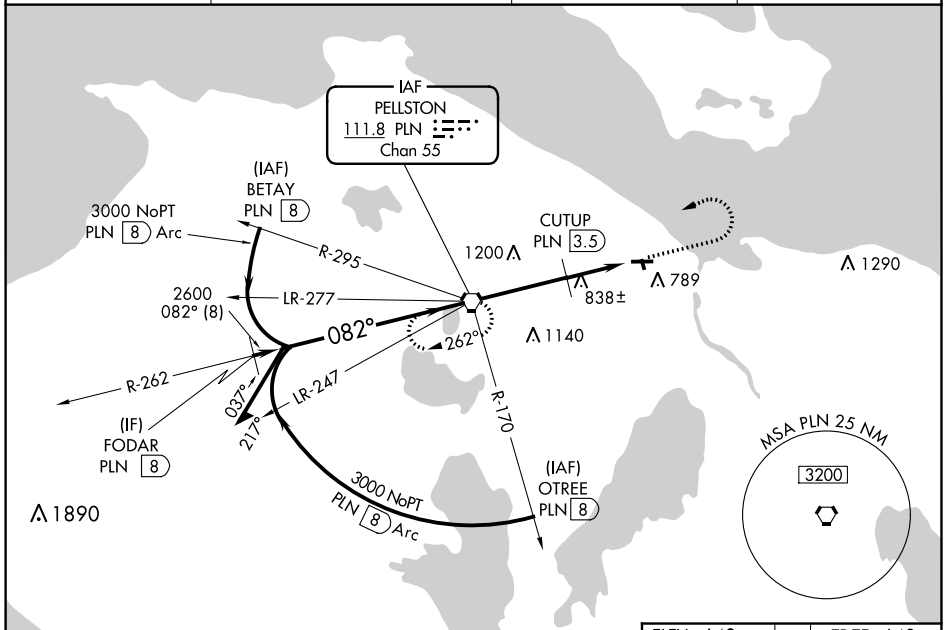
VOR RWY 10

CHEBOYGAN COUNTY (SLH)

⚠ Helicopter visibility reduction below 1 SM NA. Night landing Rwy 10, 17, 35 NA. When local altimeter setting not received, use Pellston altimeter setting and increase all MDA 60 feet; increase S-10 Cat B visibility ¼ mile, S-10 Cat C visibility ½ mile, Circling Cat B visibility ¼ mile and Circling Cat C visibility ½ mile; increase CUTUP fix minimums S-10 Cat C visibility ½ mile.

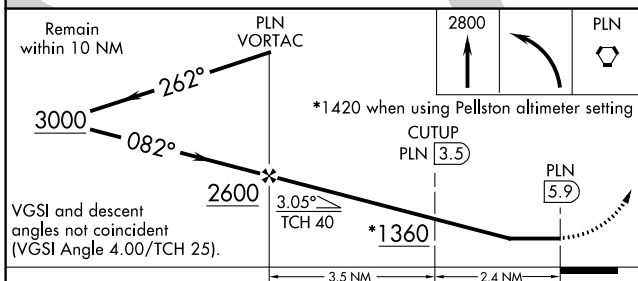
⚠ MISSED APPROACH: Climb to 2800 then left turn direct PLN VORTAC and hold.

AWOS-3 118.175	MINNEAPOLIS CENTER 134.6 354.05	UNICOM 122.8 (CTAF)	122.5 ⓪
--------------------------	---	-------------------------------	-----------------------

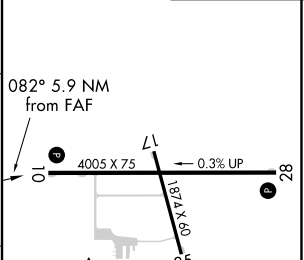


EC-1, 10 SEP 2020 to 08 OCT 2020

EC-1, 10 SEP 2020 to 08 OCT 2020



ELEV 640	TDZE 640
----------	----------



CATEGORY	A	B	C	D
S-10	1360-1	720 (800-1)	1360-2 720 (800-2)	NA
CIRCLING	1360-1	720 (800-1)	1360-2 720 (800-2)	NA
CUTUP FIX MINIMUMS				
S-10	1100-1	460 (500-1)	1100-1 1/8 460 (500-1 3/8)	NA
CIRCLING	1140-1	500 (500-1)	1140-1 1/2 500 (500-1 1/2)	NA

REIL Rwys 10 and 28 **⓪**
MIRL Rwy 10-28 and 17-35 **⓪**

FAF to MAP 5.9 NM

Knots	60	90	120	150	180
Min:Sec	5:54	3:56	2:57	2:22	1:58